

World on the Edge - Energy Data - Coal

[Coal Consumption in Top Ten Countries and the World, 1980-2009](#)

GRAPH: World Coal Consumption, 1980-2009

GRAPH: Coal Consumption in Selected Countries, 1980-2009

[Coal Consumption in the United States, 1950-2010](#)

GRAPH: Coal Consumption in the United States, 1950-2010

[Coal Consumption in China, 1965-2009](#)

GRAPH: Coal Consumption in China, 1965-2009

[Coal Consumption in the European Union, 1980-2009](#)

GRAPH: Coal Consumption in the European Union, 1980-2009

[Fossil Fuel Consumption Subsidies in Selected Countries by Fuel Type, 2009](#)

A full listing of data for the entire book is on-line at:

http://www.earth-policy.org/books/wote/wote_data

This is part of a supporting dataset for Lester R. Brown, **World On the Edge: How to Prevent Environmental and Economic Collapse** (New York: W.W. Norton & Company, 2010). For more information and a free download of the book, see Earth Policy Institute on-line at www.earth-policy.org.

Coal Consumption in Top Ten Countries and the World, 1980-2009

Year	China	United States	India	Japan	South Africa	Russia	Germany	South Korea	Poland	Australia	World Total
Quadrillion Btu											
1980	12.1	15.4	2.3	2.3	1.7	n.a.	5.5	0.5	4.0	0.7	71.4
1981	12.1	15.9	2.5	2.5	2.1	n.a.	5.6	0.6	3.6	1.1	72.4
1982	12.8	15.3	2.5	2.5	2.3	n.a.	5.6	0.6	3.7	1.1	73.5
1983	13.5	15.9	2.6	2.5	2.4	n.a.	5.6	0.7	3.7	1.1	75.3
1984	15.0	17.1	2.8	2.8	2.6	n.a.	5.8	0.8	3.9	1.1	78.9
1985	16.3	17.5	2.9	2.9	2.6	7.8	5.9	0.9	4.0	1.2	82.2
1986	17.4	17.3	3.1	2.8	2.7	8.0	5.7	0.9	4.1	1.2	83.7
1987	18.5	18.0	3.4	2.8	2.7	8.1	5.6	0.9	4.2	1.3	86.7
1988	19.8	18.8	3.6	3.0	2.9	8.0	5.6	1.0	4.1	1.4	89.3
1989	20.6	19.1	4.0	3.0	2.8	7.7	5.5	1.0	3.9	1.4	90.0
1990	21.0	19.2	3.8	3.0	2.8	7.2	5.1	1.0	3.2	1.4	88.7
1991	22.0	19.0	4.0	3.1	2.8	6.6	4.5	1.0	3.1	1.5	87.6
1992	22.8	19.1	4.3	3.1	2.7	6.1	4.1	0.9	2.9	1.5	86.8
1993	24.2	19.8	4.5	3.1	2.8	5.6	3.9	1.0	2.9	1.5	87.4
1994	25.7	19.9	4.6	3.3	2.9	5.0	3.8	1.1	2.9	1.5	87.9
1995	27.6	20.1	5.0	3.4	3.1	4.7	3.6	1.1	2.8	1.6	90.0
1996	28.9	21.0	5.3	3.5	3.2	4.6	3.6	1.3	2.9	1.7	92.7
1997	27.8	21.4	5.4	3.6	3.3	4.3	3.4	1.4	2.8	1.8	91.9
1998	25.9	21.7	5.4	3.5	3.3	4.0	3.4	1.4	2.5	1.8	89.7
1999	26.0	21.6	5.4	3.6	3.3	4.0	3.2	1.5	2.4	1.8	89.2
2000	26.5	22.6	5.7	3.9	3.3	4.2	3.4	1.7	2.3	1.9	92.8
2001	27.0	21.9	5.8	4.1	3.2	4.1	3.4	1.8	2.3	1.9	93.2
2002	28.3	21.9	6.0	4.2	3.3	4.1	3.4	1.9	2.3	2.0	95.4
2003	33.9	22.3	6.2	4.5	3.5	4.1	3.5	2.0	2.3	2.0	103.0
2004	39.0	22.5	6.8	4.8	3.8	4.0	3.4	2.1	2.3	2.1	109.7
2005	43.7	22.8	7.3	4.8	3.6	3.7	3.3	2.2	2.2	2.1	115.2
2006	48.2	22.4	7.8	4.7	3.7	3.8	3.3	2.2	2.3	2.2	120.6
2007	52.1	22.7	8.3	5.0	3.9	3.7	3.4	2.4	2.3	2.2	126.4
2008	55.8	22.4	9.2	5.1	4.1	4.0	3.2	2.6	2.2	2.0	130.4
2009	61.0	19.8	9.8	4.3	3.9	3.3	2.8	2.7	2.1	2.0	130.1

Percent

change,

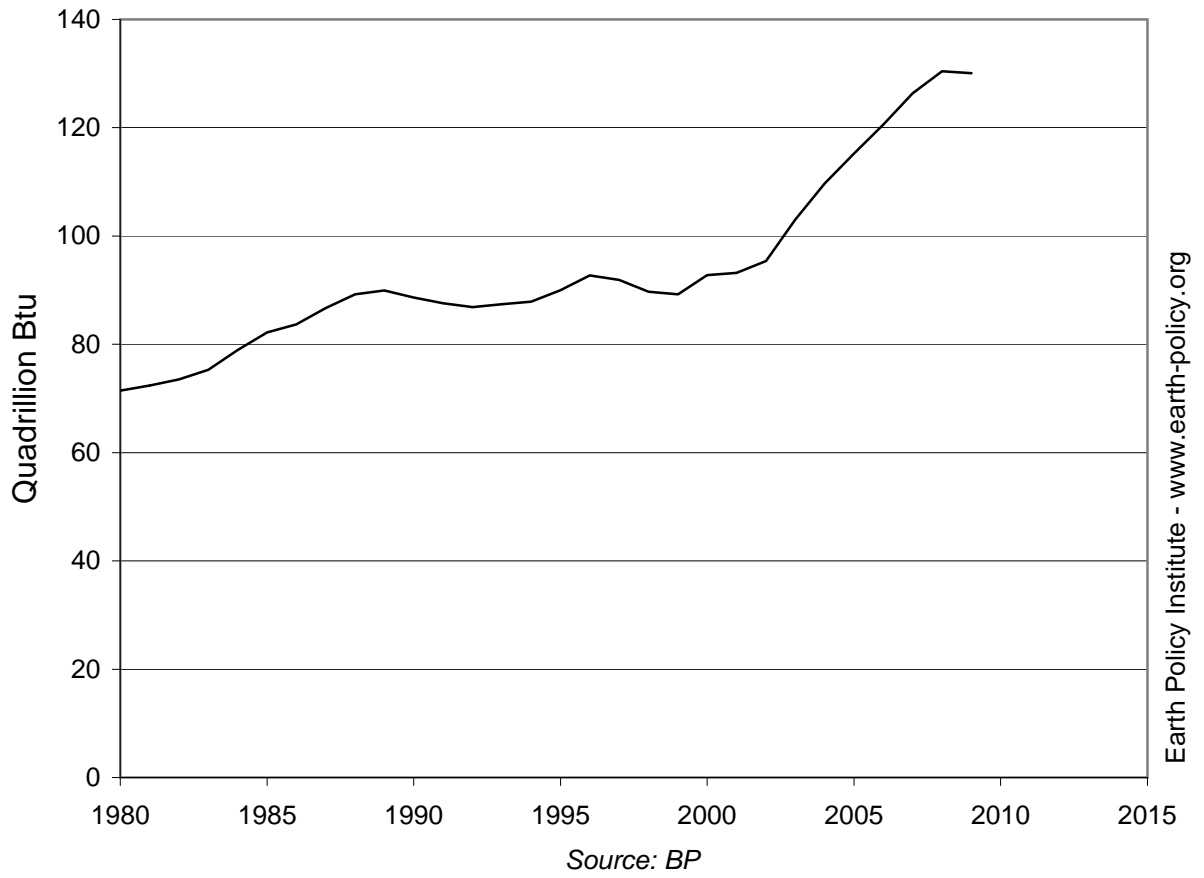
1990-2009:	190.1	3.1	157.5	43.2	39.4	-54.1	-45.2	181.3	-32.9	39.3	46.7
------------	-------	-----	-------	------	------	-------	-------	-------	-------	------	------

Note: "n.a." indicates data not available.

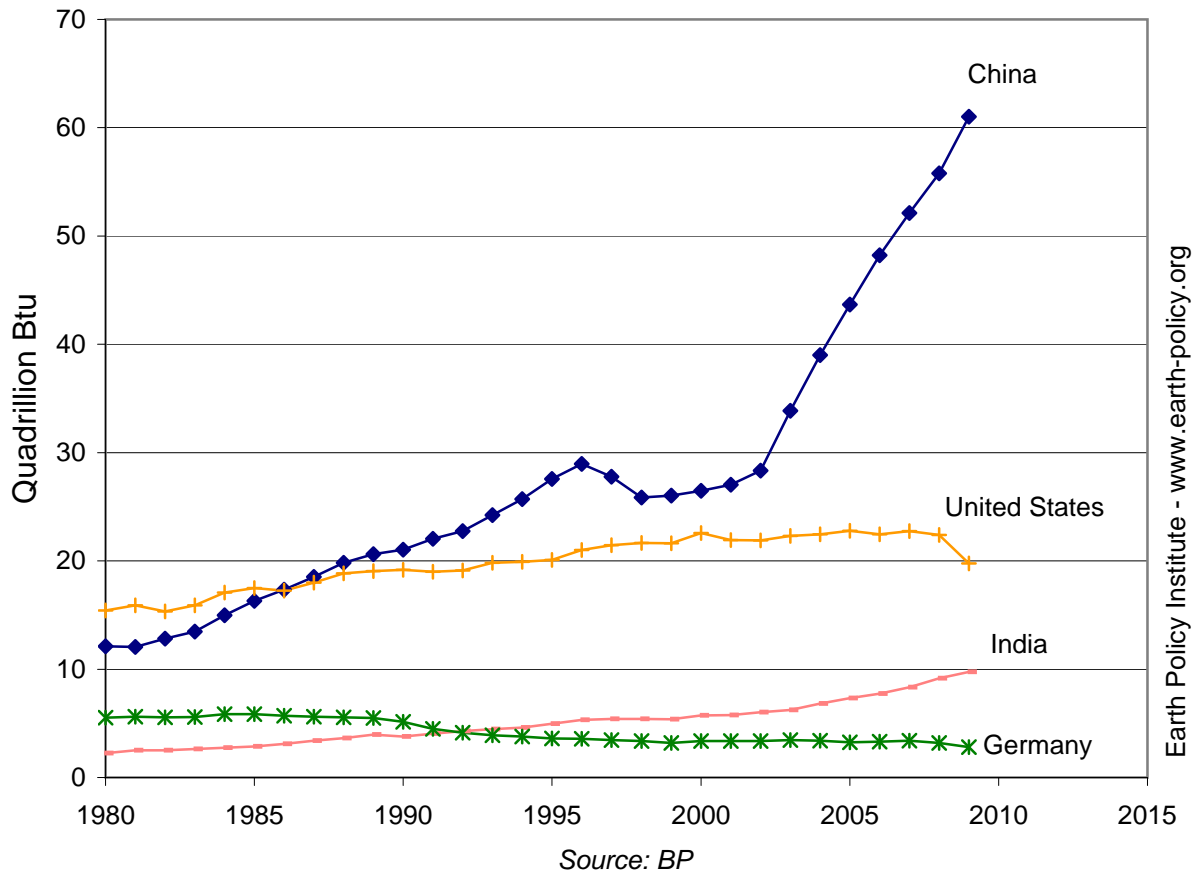
Source: Compiled by Earth Policy Institute from BP, *Statistical Review of World Energy June 2010* (London: 2010); million tons oil equivalent converted to Btu using conversion factor from International Energy Agency, "Unit Converter," at www.iea.org/stats/unit.asp.

This is part of a supporting dataset for Lester R. Brown, **World on the Edge: How to Prevent Environmental and Economic Collapse** (New York: W.W. Norton & Company, 2011). For more information and a free download of the book, see Earth Policy Institute on-line at www.earth-policy.org.

World Coal Consumption, 1980-2009



Coal Consumption in Selected Countries, 1980-2009

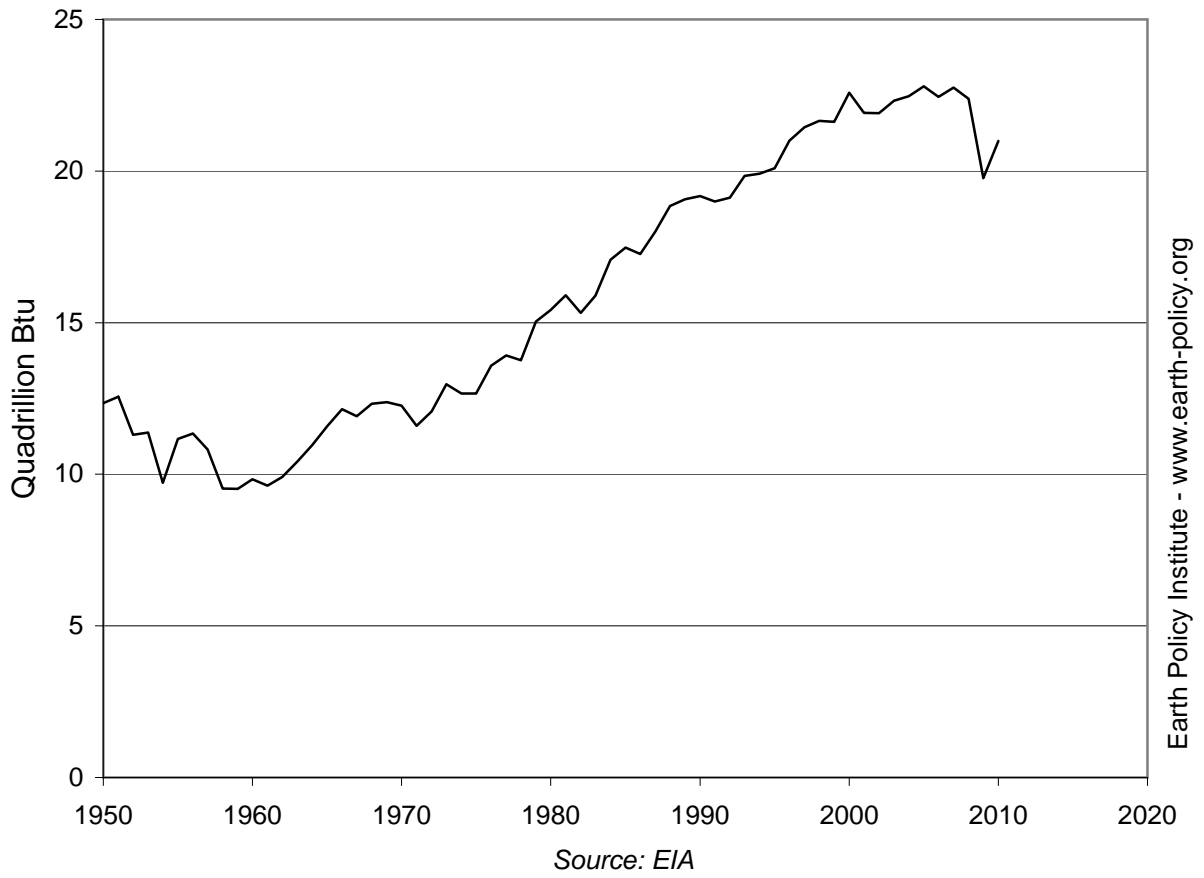


Coal Consumption in the United States, 1950-2010

Year	Consumption Quadrillion Btu
1950	12.3
1951	12.6
1952	11.3
1953	11.4
1954	9.7
1955	11.2
1956	11.3
1957	10.8
1958	9.5
1959	9.5
1960	9.8
1961	9.6
1962	9.9
1963	10.4
1964	11.0
1965	11.6
1966	12.1
1967	11.9
1968	12.3
1969	12.4
1970	12.3
1971	11.6
1972	12.1
1973	13.0
1974	12.7
1975	12.7
1976	13.6
1977	13.9
1978	13.8
1979	15.0
1980	15.4
1981	15.9
1982	15.3
1983	15.9
1984	17.1
1985	17.5
1986	17.3
1987	18.0
1988	18.8
1989	19.1
1990	19.2
1991	19.0
1992	19.1
1993	19.8
1994	19.9
1995	20.1
1996	21.0
1997	21.4
1998	21.7
1999	21.6
2000	22.6
2001	21.9
2002	21.9
2003	22.3
2004	22.5
2005	22.8
2006	22.4
2007	22.7
2008	22.4
2009	19.8
2010	21.0

Source: Compiled by Earth Policy Institute, with data for 1950-2005 from U.S. Department of Energy (DOE), Energy Information Administration (EIA), "Annual Energy Review: Coal," at www.eia.doe.gov/aer/coal.html, updated 26 June 2009; 2006-2010 projection from DOE, EIA, "Short Term Energy Outlook," at www.eia.doe.gov/emeu/steo, updated 8 September 2010; short ton values converted into Btu using annual heat content of U.S. coal from DOE, EIA, "Annual Energy Review: Thermal Conversion Factors," at www.eia.doe.gov/emeu/aer/append_a.html, updated 19 August 2010, assuming 2010 heat content equals that of 2009.

Coal Consumption in the United States, 1950-2010



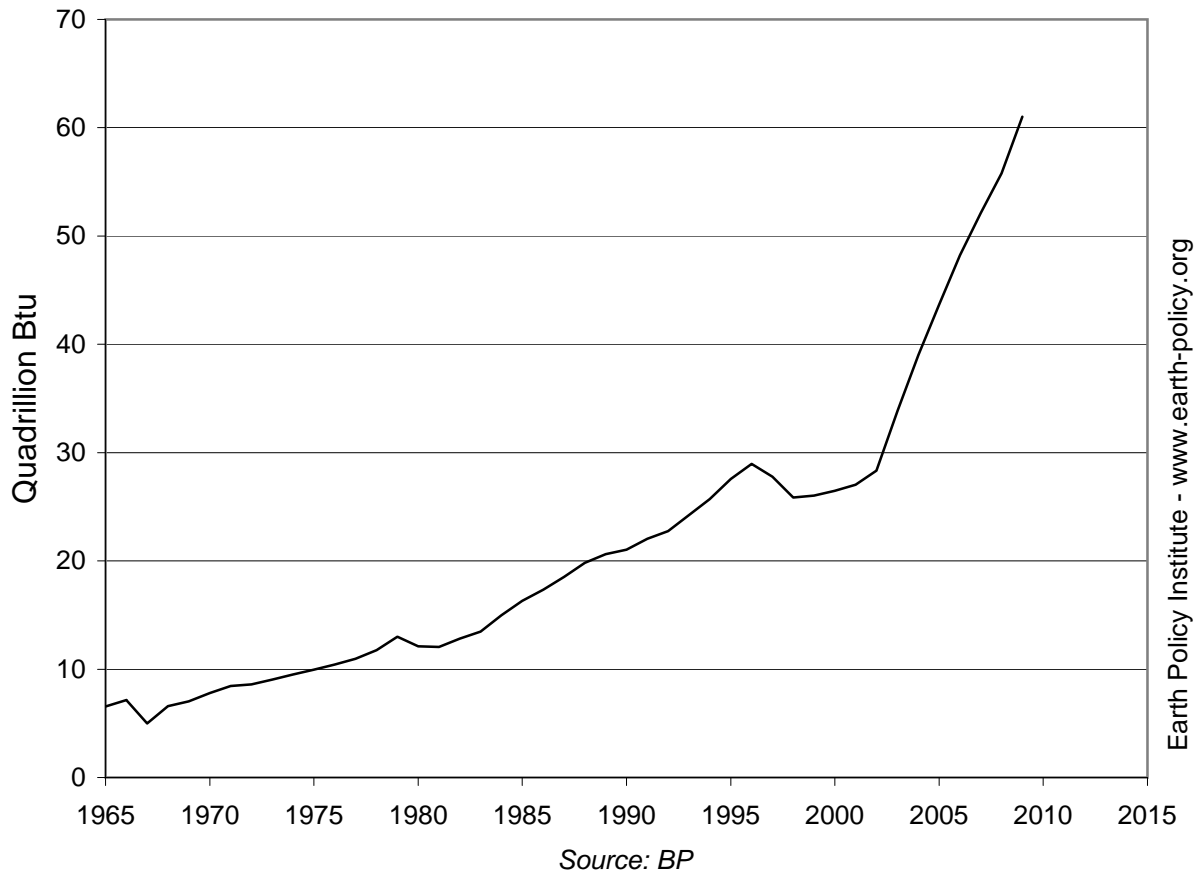
Coal Consumption in China, 1965-2009

Year	Consumption Quadrillion Btu
1965	6.6
1966	7.2
1967	5.0
1968	6.6
1969	7.0
1970	7.8
1971	8.5
1972	8.6
1973	9.0
1974	9.5
1975	10.0
1976	10.4
1977	11.0
1978	11.8
1979	13.0
1980	12.1
1981	12.1
1982	12.8
1983	13.5
1984	15.0
1985	16.3
1986	17.4
1987	18.5
1988	19.8
1989	20.6
1990	21.0
1991	22.0
1992	22.8
1993	24.2
1994	25.7
1995	27.6
1996	28.9
1997	27.8
1998	25.9
1999	26.0
2000	26.5
2001	27.0
2002	28.3
2003	33.9
2004	39.0
2005	43.7
2006	48.2
2007	52.1
2008	55.8
2009	61.0

Source: Compiled by Earth Policy Institute from BP, *Statistical Review of World Energy June 2010* (London: 2010); million tons oil equivalent converted to Btu using conversion factor from International Energy Agency, "Unit Converter," at www.iea.org/stats/unit.asp.

This is part of a supporting dataset for Lester R. Brown, **World on the Edge: How to Prevent Environmental and Economic Collapse** (New York: W.W. Norton & Company, 2011). For more information and a free download of the book, see Earth Policy Institute on-line at www.earth-policy.org.

Coal Consumption in China, 1965-2009



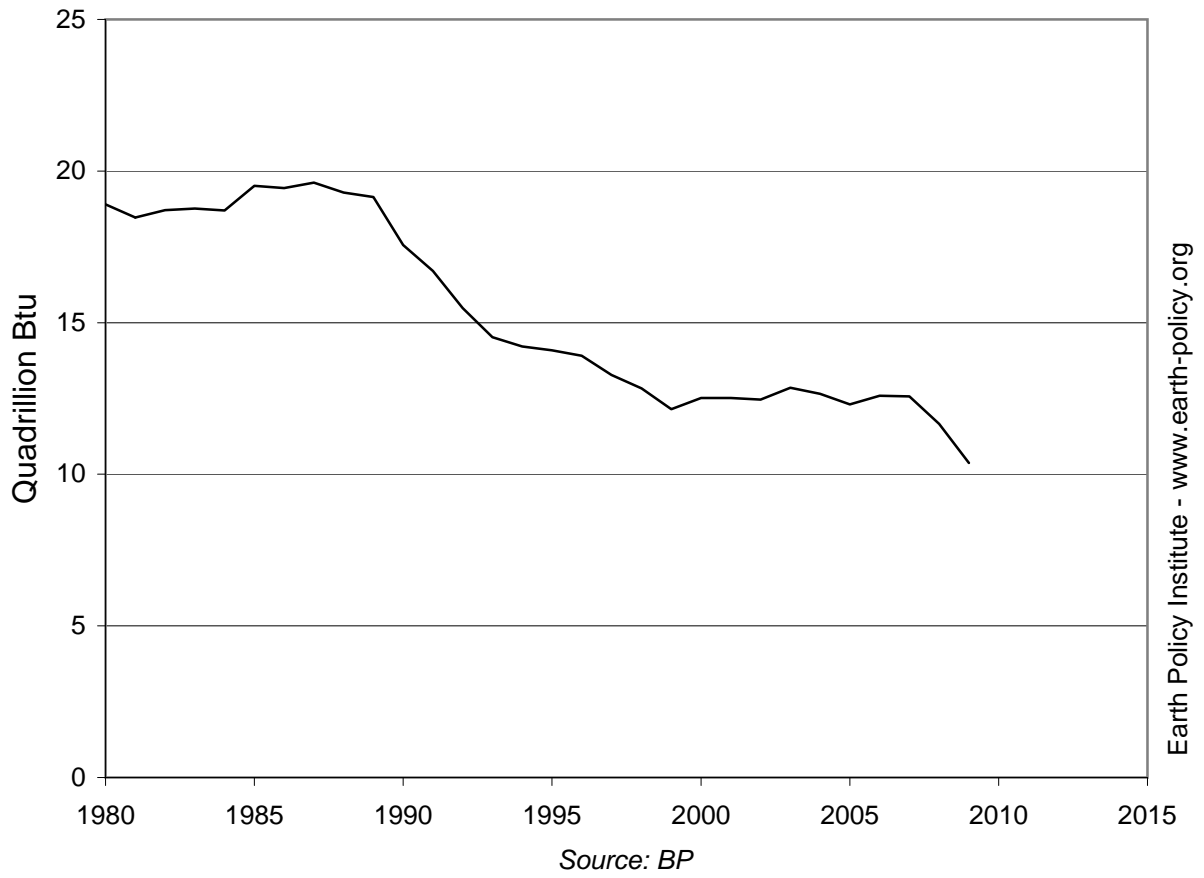
Coal Consumption in the European Union, 1980-2009

Year	Consumption Quadrillion Btu
1980	18.9
1981	18.5
1982	18.7
1983	18.8
1984	18.7
1985	19.5
1986	19.4
1987	19.6
1988	19.3
1989	19.1
1990	17.6
1991	16.7
1992	15.5
1993	14.5
1994	14.2
1995	14.1
1996	13.9
1997	13.3
1998	12.8
1999	12.1
2000	12.5
2001	12.5
2002	12.5
2003	12.9
2004	12.7
2005	12.3
2006	12.6
2007	12.6
2008	11.7
2009	10.4

Source: Compiled by Earth Policy Institute from BP, *Statistical Review of World Energy June 2010* (London: 2010); million tons oil equivalent converted to Btu using conversion factor from International Energy Agency, "Unit Converter," at www.iea.org/stats/unit.asp.

This is part of a supporting dataset for Lester R. Brown, **World on the Edge: How to Prevent Environmental and Economic Collapse** (New York: W.W. Norton & Company, 2011). For more information and a free download of the book, see Earth Policy Institute on-line at www.earth-policy.org.

Coal Consumption in the European Union, 1980-2009



Fossil Fuel Consumption Subsidies in Selected Countries by Fuel Type, 2009

	Iran	Russia	India	China	Indonesia
Total					
Subsidies (Billion Dollars)	66.4	33.6	21.1	18.6	12.2
<i>per capita (Dollars)</i>	895	238	18	14	53
<i>as share of GDP (Percent)</i>	20.1	2.7	1.7	0.4	2.3
Rate of Subsidization (Percent)	89	23	15	4	25
By Fuel					
Oil (Billion Dollars)	30.1	n/a	12.1	5.0	8.6
<i>Rate of Subsidization (Percent)</i>	88	n/a	18	3	28
Natural Gas (Billion Dollars)	24.8	18.7	2.7	0.5	n/a
<i>Rate of Subsidization (Percent)</i>	95	50	77	2	n/a
Coal (Billion Dollars)	n/a	n/a	n/a	4.3	n/a
<i>Rate of Subsidization (Percent)</i>	n/a	n/a	n/a	7	n/a
Electricity (Billion Dollars)	11.4	14.9	6.3	8.8	3.6
<i>Rate of Subsidization (Percent)</i>	82	27	12	4	31

Note: n/a indicates data that are unavailable. The five countries profiled are those selected and analyzed by the International Energy Agency; they have some of the largest fossil fuel subsidies but have plans to introduce market-based pricing gradually in the future. For a list of fossil fuel subsidies by fuel and country, see www.worldenergyoutlook.org/docs/weo2010/key_graphs.pdf.

Source: Compiled by Earth Policy Institute from International Energy Agency, *World Energy Outlook 2010* (Paris: 9 November 2010), pp. 598, 601, 605, 611, 614.

This is part of a supporting dataset for Lester R. Brown, **World On the Edge: How to Prevent Environmental and Economic Collapse** (New York: W.W. Norton & Company, 2010). For more information and a free download of the book, see Earth Policy Institute on-line at www.earth-policy.org.