

Full Planet, Empty Plates

Supporting Data for Chapter 1: Food: The Weak Link

[World Grain Consumption and Stocks, 1960-2011](#)

GRAPH: World Grain Stocks as Days of Consumption, 1960-2011

GRAPH: World Grain Stocks, 1960-2011

[World Grain Production, Area, and Yield, 1950-2011](#)

GRAPH: World Average Grain Yields, 1950-2011

[World Grain Production Per Person, 1950-2011](#)

GRAPH: World Grain Production Per Person, 1950-2011

[World Grain Production and Consumption, 1960-2011](#)

GRAPH: World Grain Balance, 1960-2011

[World Grainland Area Per Person, 1950-2011](#)

GRAPH: World Grain Area Harvested Per Person, 1950-2011

GRAPH: World Grain Area Harvested, 1950-2011

[World Grain Production, Consumption, and Trade, 1960-2011](#)

GRAPH: World Grain Exports, 1960-2011

GRAPH: World Grain Imports as a Share of Consumption, 1960-2011

[World Corn, Wheat, and Rice Production, 1960-2011](#)

GRAPH: World Corn, Wheat, and Rice Production, 1960-2011

[World Corn, Wheat, and Rice Area, 1960-2011](#)

GRAPH: World Corn, Wheat, and Rice Area, 1960-2011

[World Average Corn, Wheat, and Rice Yields, 1960-2011](#)

GRAPH: World Average Corn, Wheat, and Rice Yields, 1960-2011

[Top 10 Producers of Corn, Wheat, Rice, and Total Grain, 2011](#)

[Top 10 Importers of Corn, Wheat, Rice, and Total Grain, 2011](#)

[Top 10 Exporters of Corn, Wheat, Rice, and Total Grain, 2011](#)

[Top 10 Consumers of Corn, Wheat, Rice, and Total Grain, 2011](#)

[Grain Area Harvested Per Person in Selected Countries and the World in 1950 and 2011, with Projection to 2050](#)

[World Monthly Food Price Indices, January 1990 – August 2012](#)

GRAPH: World Monthly Food Price Index, January 1990 - August 2012

GRAPH: World Monthly Grains Price Index, January 1990 - August 2012

GRAPH: World Monthly Price Indices for Meat, Dairy, Grains, Oils, and Sugar, January 1990 - August 2012

[Countries Receiving World Food Programme Aid, August 2012](#)

[Food Insecurity Indicators in World's Hungriest Countries](#)

A full listing of data for the entire book is on-line at:

http://www.earth-policy.org/books/fpep/fpep_data

This is part of a supporting dataset for Lester R. Brown, **Full Planet, Empty Plates: The New Geopolitics of Food Scarcity** (New York: W.W. Norton & Company, 2012). For more information, see Earth Policy Institute on-line at www.earth-policy.org.

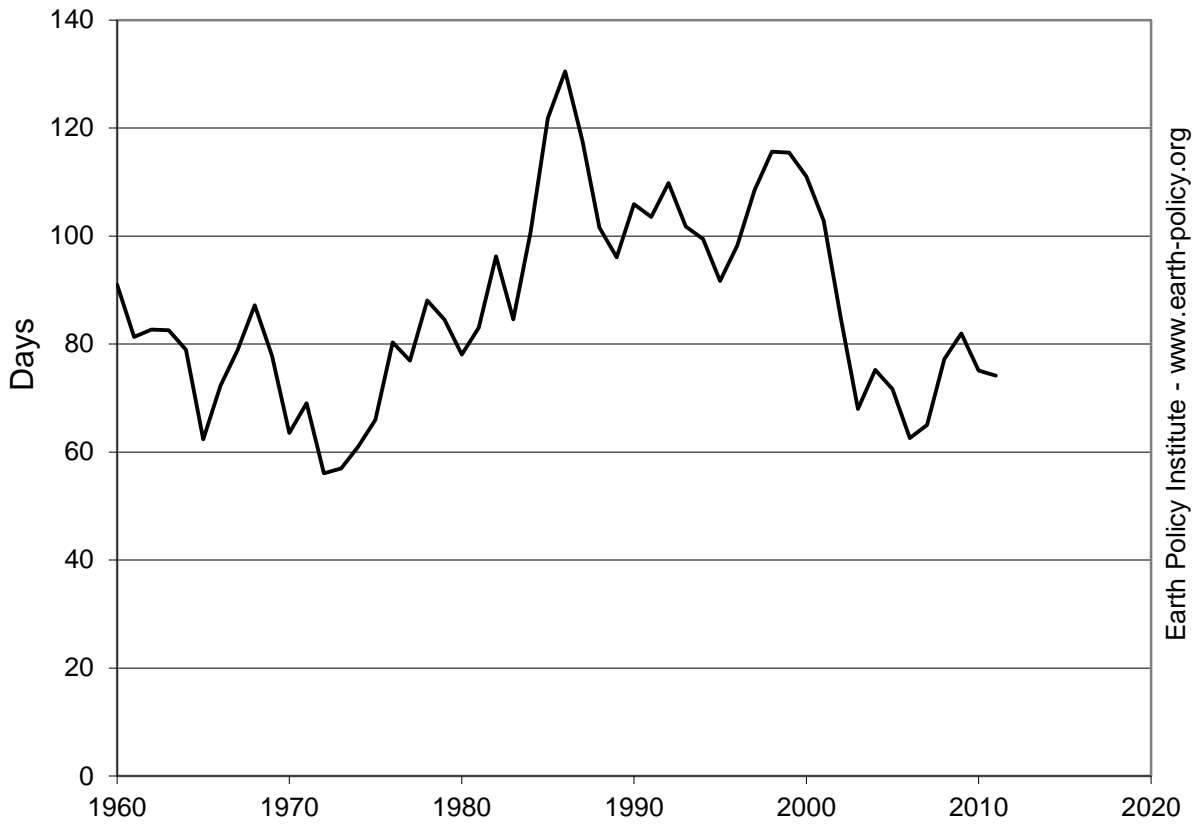
World Grain Consumption and Stocks, 1960-2011

Year	Consumption	Stocks	
	Million Tons	Million Tons	Days of Consumption
1960	815	203	91
1961	817	182	81
1962	838	190	83
1963	852	193	83
1964	896	194	79
1965	932	159	62
1966	957	189	72
1967	988	213	79
1968	1,020	244	87
1969	1,069	228	78
1970	1,108	193	64
1971	1,150	218	69
1972	1,174	180	56
1973	1,230	192	57
1974	1,190	199	61
1975	1,212	219	66
1976	1,273	280	80
1977	1,319	278	77
1978	1,380	333	88
1979	1,416	328	84
1980	1,440	308	78
1981	1,458	331	83
1982	1,475	389	96
1983	1,501	348	85
1984	1,549	428	101
1985	1,553	518	122
1986	1,601	572	130
1987	1,640	528	118
1988	1,620	451	102
1989	1,677	441	96
1990	1,707	495	106
1991	1,714	486	104
1992	1,736	522	110
1993	1,740	485	102
1994	1,762	480	99
1995	1,741	437	92
1996	1,809	487	98
1997	1,821	541	109
1998	1,835	581	116
1999	1,856	587	115
2000	1,861	566	111
2001	1,905	537	103
2002	1,909	444	85
2003	1,936	360	68
2004	1,990	410	75
2005	2,020	396	72
2006	2,045	351	63
2007	2,097	373	65
2008	2,152	455	77
2009	2,189	491	82
2010	2,227	458	75
2011	2,285	464	74

Source: Compiled by Earth Policy Institute from U.S. Department of Agriculture, *Production, Supply, and Distribution*, electronic database, at www.fas.usda.gov/psdonline, updated 11 July 2012.

This is part of a supporting dataset for Lester R. Brown, **Full Planet, Empty Plates: The New Geopolitics of Food Scarcity** (New York: W.W. Norton & Company, 2012). For more information, see Earth Policy Institute on-line at www.earth-policy.org.

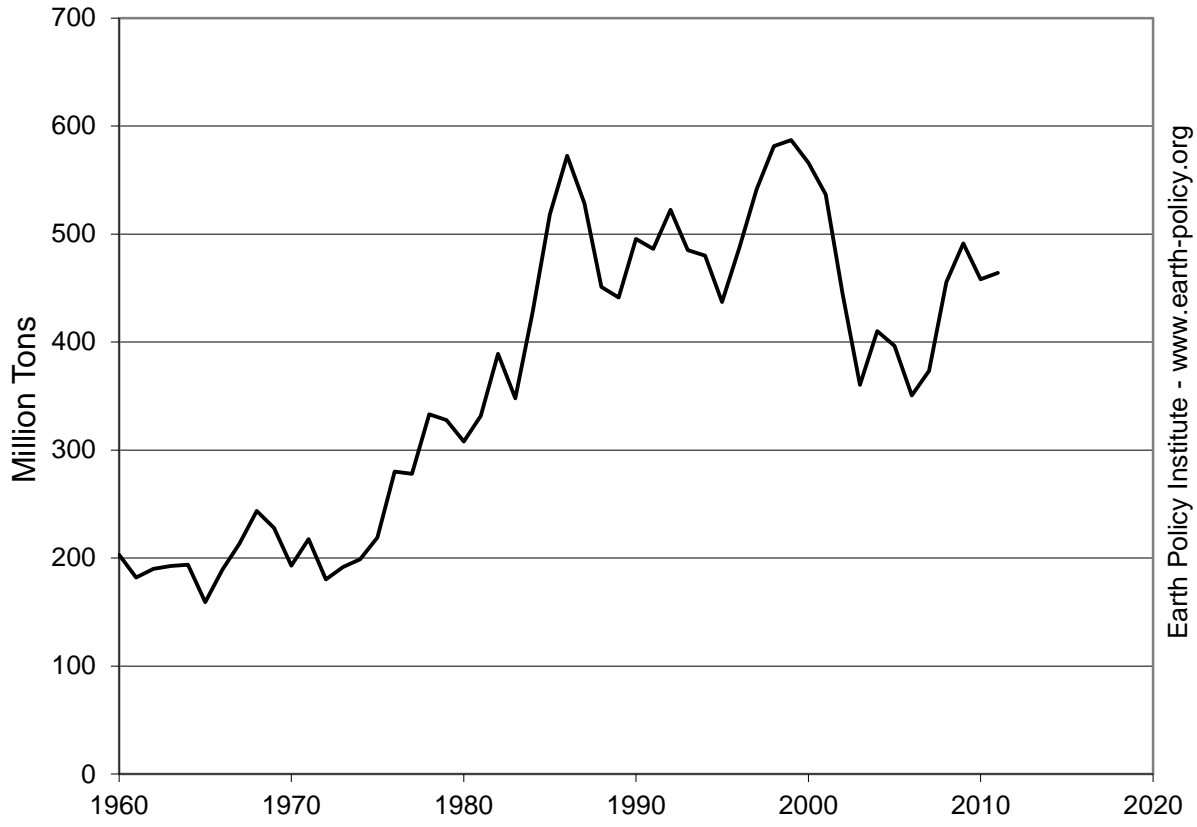
World Grain Stocks as Days of Consumption, 1960-2011



Source: USDA

Earth Policy Institute - www.earth-policy.org

World Grain Stocks, 1960-2011



Source: USDA

Earth Policy Institute - www.earth-policy.org

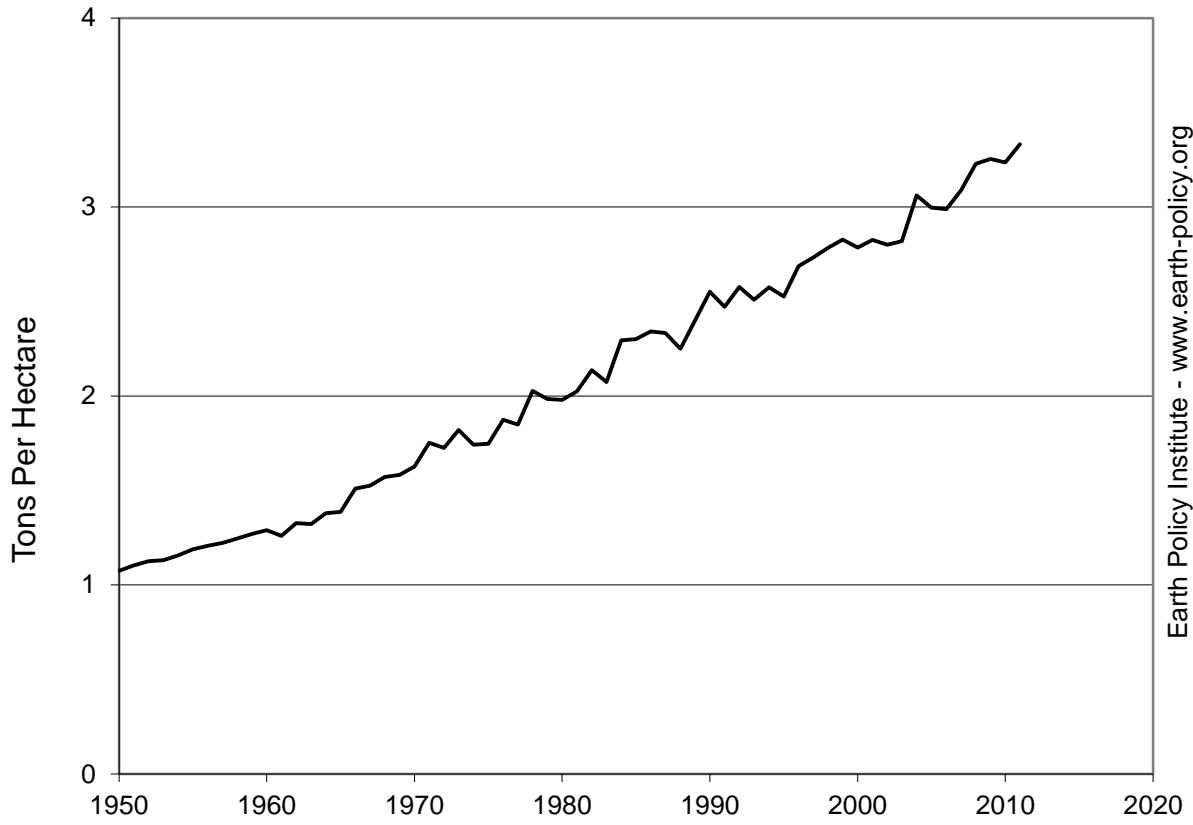
World Grain Production, Area, and Yield, 1950-2011

Year	Production	Area	Yield
	Million Tons	Million Hectares	Tons Per Hectare
1950	631	587	1.07
1951	655	593	1.10
1952	680	604	1.13
1953	705	623	1.13
1954	730	631	1.16
1955	759	639	1.19
1956	773	640	1.21
1957	788	645	1.22
1958	802	644	1.25
1959	815	642	1.27
1960	824	639	1.29
1961	800	635	1.26
1962	850	641	1.33
1963	858	648	1.32
1964	906	657	1.38
1965	905	653	1.39
1966	988	655	1.51
1967	1,014	665	1.52
1968	1,052	670	1.57
1969	1,063	672	1.58
1970	1,079	663	1.63
1971	1,177	672	1.75
1972	1,141	661	1.73
1973	1,253	688	1.82
1974	1,203	690	1.74
1975	1,237	707	1.75
1976	1,342	716	1.87
1977	1,319	714	1.85
1978	1,445	713	2.03
1979	1,409	710	1.98
1980	1,429	722	1.98
1981	1,482	732	2.02
1982	1,533	717	2.14
1983	1,469	708	2.07
1984	1,632	711	2.29
1985	1,647	716	2.30
1986	1,664	710	2.34
1987	1,601	686	2.33
1988	1,550	689	2.25
1989	1,673	697	2.40
1990	1,769	693	2.55
1991	1,709	692	2.47
1992	1,786	693	2.58
1993	1,711	682	2.51
1994	1,757	682	2.58
1995	1,707	676	2.53
1996	1,872	697	2.69
1997	1,879	688	2.73
1998	1,877	674	2.78
1999	1,874	663	2.83
2000	1,846	663	2.78
2001	1,880	665	2.83
2002	1,821	650	2.80
2003	1,864	661	2.82
2004	2,043	668	3.06
2005	2,016	673	3.00
2006	2,005	671	2.99
2007	2,126	688	3.09
2008	2,244	695	3.23
2009	2,238	688	3.25
2010	2,197	679	3.23
2011	2,304	692	3.33

Source: Compiled by Earth Policy Institute with ; and with 1960-2011 from U.S. Department of Agriculture, *Production, Supply, & Distribution*, electronic database, at www.fas.usda.gov/psdonline, updated 11 July 2012.

This is part of a supporting dataset for Lester R. Brown, **Full Planet, Empty Plates: The New Geopolitics of Food Scarcity** (New York: W.W. Norton & Company, 2012). For more information, see Earth Policy Institute on-line at www.earth-policy.org.

World Average Grain Yields, 1950-2011



Source: Worldwatch; USDA

Earth Policy Institute - www.earth-policy.org

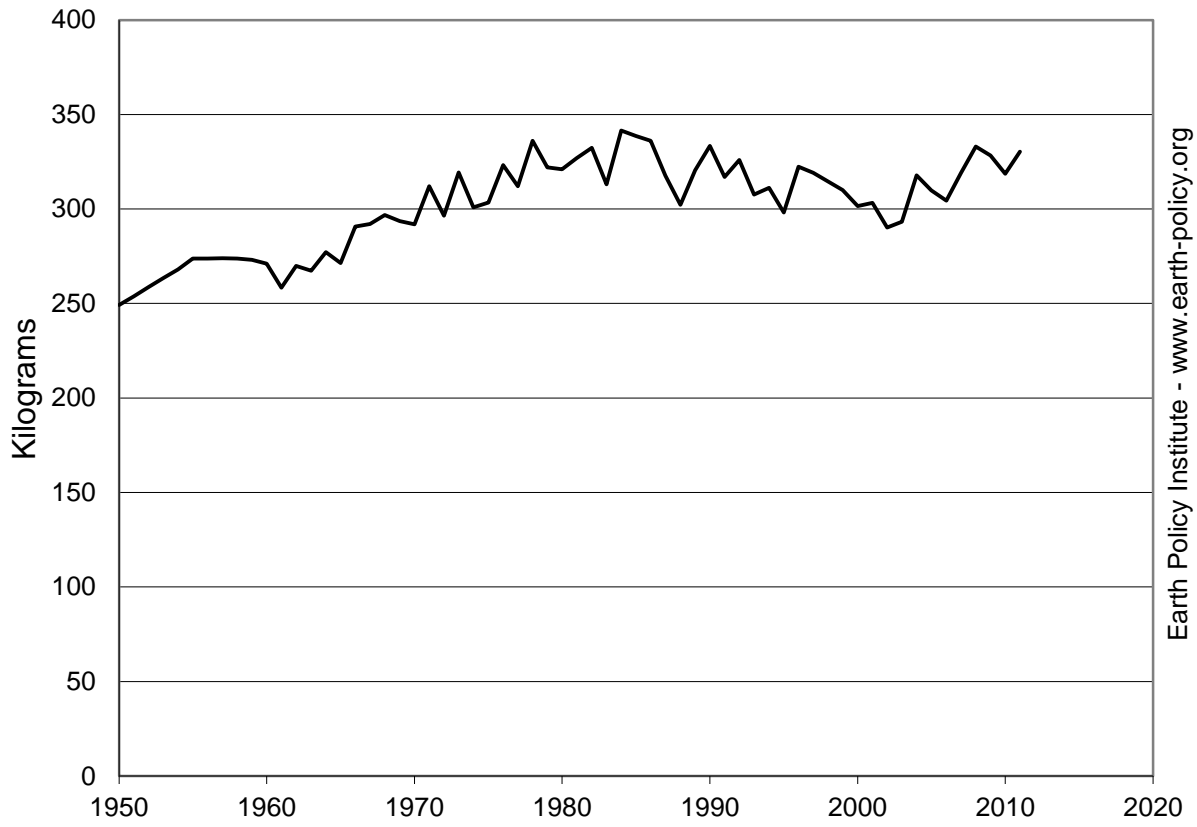
World Grain Production Per Person, 1950-2011

Year	Production Million Tons	Population Millions	Production Per Person Kilograms
1950	631	2,532	249
1951	655	2,581	254
1952	680	2,628	259
1953	705	2,676	263
1954	730	2,724	268
1955	759	2,773	274
1956	773	2,824	274
1957	788	2,876	274
1958	802	2,929	274
1959	815	2,983	273
1960	824	3,038	271
1961	800	3,094	258
1962	850	3,150	270
1963	858	3,208	267
1964	906	3,269	277
1965	905	3,333	271
1966	988	3,401	291
1967	1,014	3,472	292
1968	1,052	3,546	297
1969	1,063	3,621	294
1970	1,079	3,696	292
1971	1,177	3,772	312
1972	1,141	3,848	296
1973	1,253	3,925	319
1974	1,203	4,001	301
1975	1,237	4,076	303
1976	1,342	4,151	323
1977	1,319	4,226	312
1978	1,445	4,300	336
1979	1,409	4,376	322
1980	1,429	4,453	321
1981	1,482	4,532	327
1982	1,533	4,612	332
1983	1,469	4,694	313
1984	1,632	4,778	342
1985	1,647	4,863	339
1986	1,664	4,951	336
1987	1,601	5,039	318
1988	1,550	5,129	302
1989	1,673	5,218	321
1990	1,769	5,306	333
1991	1,709	5,393	317
1992	1,786	5,478	326
1993	1,711	5,562	308
1994	1,757	5,644	311
1995	1,707	5,726	298
1996	1,872	5,807	322
1997	1,879	5,887	319
1998	1,877	5,966	315
1999	1,874	6,045	310
2000	1,846	6,123	301
2001	1,880	6,200	303
2002	1,821	6,277	290
2003	1,864	6,353	293
2004	2,043	6,430	318
2005	2,016	6,507	310
2006	2,005	6,584	304
2007	2,126	6,662	319
2008	2,244	6,740	333
2009	2,238	6,818	328
2010	2,197	6,896	319
2011	2,304	6,974	330

Source: Compiled by Earth Policy Institute with 1950-59 from Worldwatch Institute, Signposts 2000, CD-Rom (Washington, DC: 2000); and with 1960-2011 from U.S. Department of Agriculture, *Production, Supply, & Distribution*, electronic database, at www.fas.usda.gov/psdonline, updated 11 July 2012; population from U.N. Population Division, *World Population Prospects: The 2010 Revision*, electronic database, at esa.un.org/unpd/wpp/index.htm, updated 3 May 2011.

This is part of a supporting dataset for Lester R. Brown, **Full Planet, Empty Plates: The New Geopolitics of Food Scarcity** (New York: W.W. Norton & Company, 2012). For more information, see Earth Policy Institute on-line at www.earth-policy.org.

World Grain Production Per Person, 1950-2011



Source: Worldwatch; USDA; UNPop

Earth Policy Institute - www.earth-policy.org

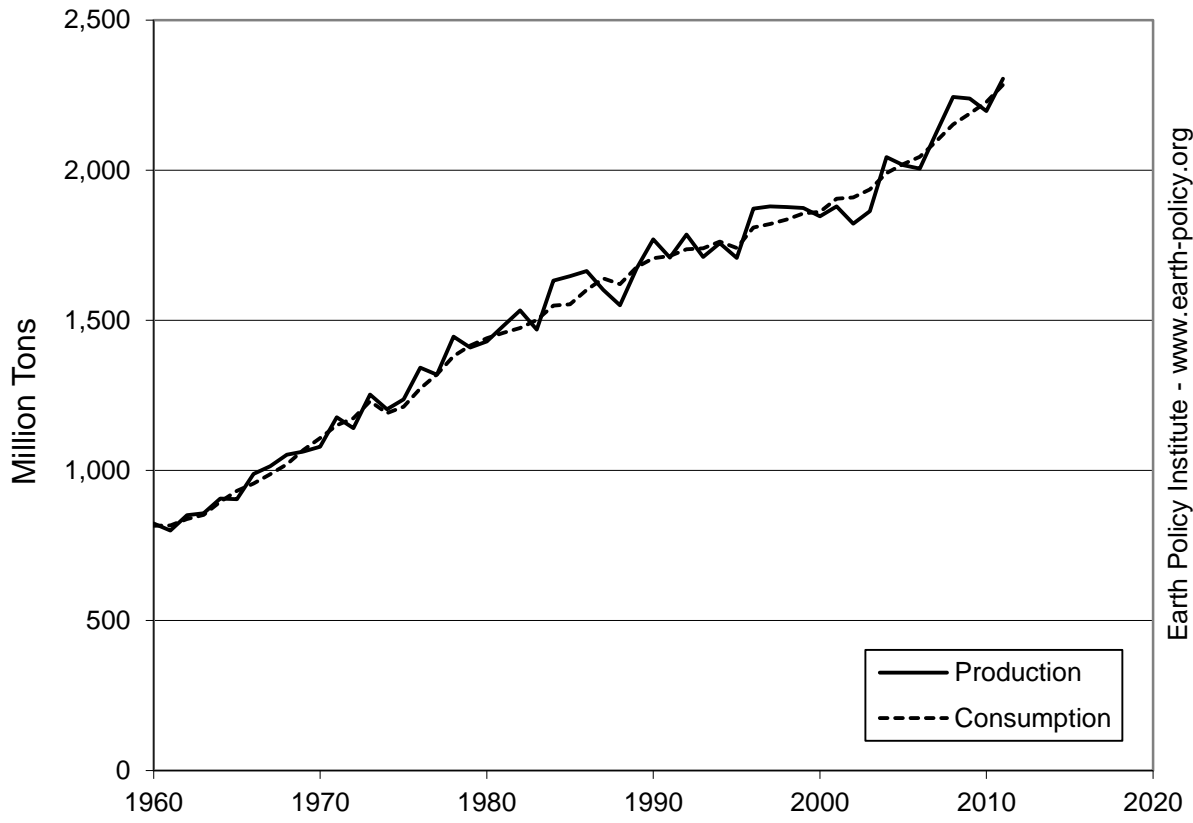
World Grain Production and Consumption, 1960-2011

Year	Production	Consumption	Surplus or Deficit
	Million Tons		
1960	824	815	8
1961	800	817	-17
1962	850	838	13
1963	858	852	6
1964	906	896	10
1965	905	932	-27
1966	988	957	32
1967	1,014	988	27
1968	1,052	1,020	32
1969	1,063	1,069	-6
1970	1,079	1,108	-29
1971	1,177	1,150	27
1972	1,141	1,174	-33
1973	1,253	1,230	23
1974	1,203	1,190	13
1975	1,237	1,212	25
1976	1,342	1,273	69
1977	1,319	1,319	0
1978	1,445	1,380	65
1979	1,409	1,416	-6
1980	1,429	1,440	-11
1981	1,482	1,458	24
1982	1,533	1,475	58
1983	1,469	1,501	-31
1984	1,632	1,549	83
1985	1,647	1,553	94
1986	1,664	1,601	63
1987	1,601	1,640	-39
1988	1,550	1,620	-70
1989	1,673	1,677	-4
1990	1,769	1,707	62
1991	1,709	1,714	-5
1992	1,786	1,736	50
1993	1,711	1,740	-29
1994	1,757	1,762	-6
1995	1,707	1,741	-34
1996	1,872	1,809	63
1997	1,879	1,821	58
1998	1,877	1,835	41
1999	1,874	1,856	18
2000	1,846	1,861	-15
2001	1,880	1,905	-25
2002	1,821	1,909	-88
2003	1,864	1,936	-72
2004	2,043	1,990	54
2005	2,016	2,020	-4
2006	2,005	2,045	-40
2007	2,126	2,097	29
2008	2,244	2,152	92
2009	2,238	2,189	50
2010	2,197	2,227	-30
2011	2,304	2,285	20

Source: Compiled by Earth Policy Institute from U.S. Department of Agriculture, *Production, Supply & Distribution*, electronic database, www.fas.usda.gov, updated 11 July 2012.

This is part of a supporting dataset for Lester R. Brown, **Full Planet, Empty Plates: The New Geopolitics of Food Scarcity** (New York: W.W. Norton & Company, 2012). For more information, see Earth Policy Institute on-line at www.earth-policy.org.

World Grain Balance, 1960-2011



Source: USDA

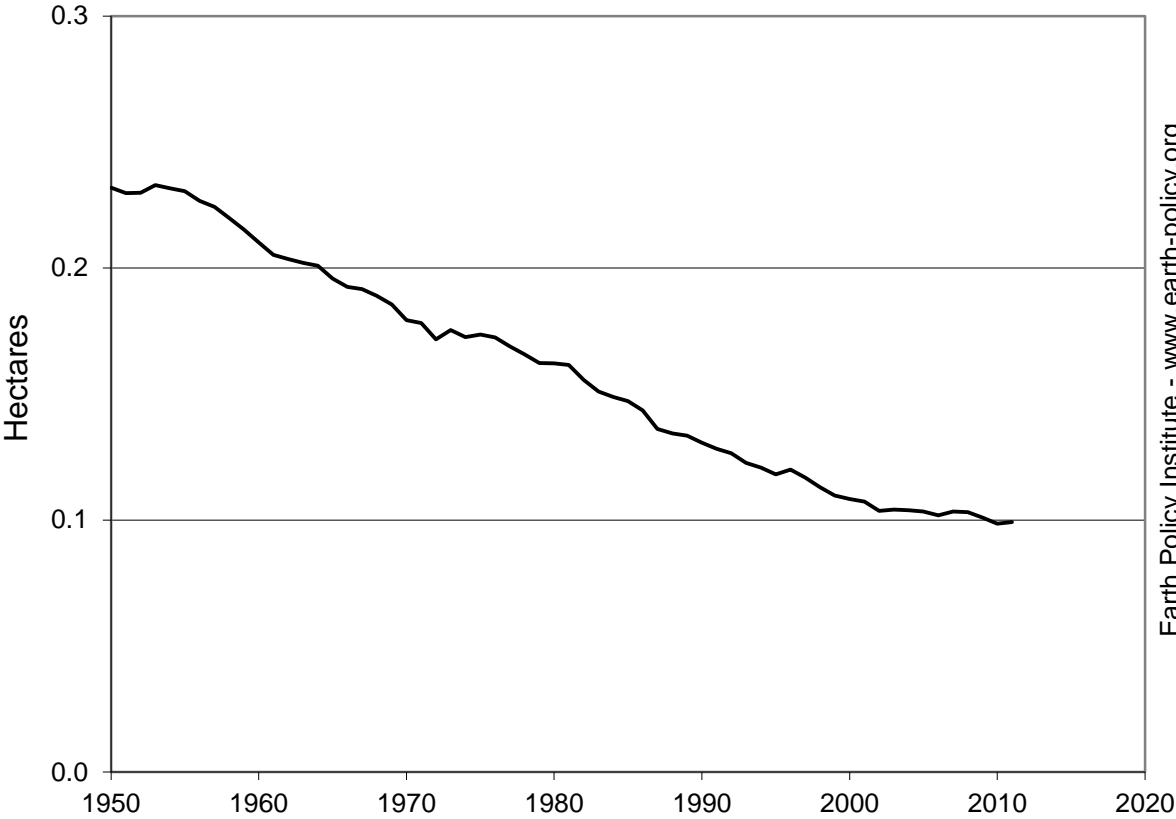
World Grainland Area Per Person, 1950-2011

Year	Total Area Harvested Million Hectares	Population Millions	Grainland Area Per Person Hectares
1950	587	2,532	0.23
1951	593	2,581	0.23
1952	604	2,628	0.23
1953	623	2,676	0.23
1954	631	2,724	0.23
1955	639	2,773	0.23
1956	640	2,824	0.23
1957	645	2,876	0.22
1958	644	2,929	0.22
1959	642	2,983	0.22
1960	639	3,038	0.21
1961	635	3,094	0.21
1962	641	3,150	0.20
1963	648	3,208	0.20
1964	657	3,269	0.20
1965	653	3,333	0.20
1966	655	3,401	0.19
1967	665	3,472	0.19
1968	670	3,546	0.19
1969	672	3,621	0.19
1970	663	3,696	0.18
1971	672	3,772	0.18
1972	661	3,848	0.17
1973	688	3,925	0.18
1974	690	4,001	0.17
1975	707	4,076	0.17
1976	716	4,151	0.17
1977	714	4,226	0.17
1978	713	4,300	0.17
1979	710	4,376	0.16
1980	722	4,453	0.16
1981	732	4,532	0.16
1982	717	4,612	0.16
1983	708	4,694	0.15
1984	711	4,778	0.15
1985	716	4,863	0.15
1986	710	4,951	0.14
1987	686	5,039	0.14
1988	689	5,129	0.13
1989	697	5,218	0.13
1990	693	5,306	0.13
1991	692	5,393	0.13
1992	693	5,478	0.13
1993	682	5,562	0.12
1994	682	5,644	0.12
1995	676	5,726	0.12
1996	697	5,807	0.12
1997	688	5,887	0.12
1998	674	5,966	0.11
1999	663	6,045	0.11
2000	663	6,123	0.11
2001	665	6,200	0.11
2002	650	6,277	0.10
2003	661	6,353	0.10
2004	668	6,430	0.10
2005	673	6,507	0.10
2006	671	6,584	0.10
2007	688	6,662	0.10
2008	695	6,740	0.10
2009	688	6,818	0.10
2010	679	6,896	0.10
2011	692	6,974	0.10

Source: Compiled by Earth Policy Institute with 1950-59 from Worldwatch Institute, *Signposts 2000*, CD-Rom (Washington, DC: 2000); 1960-2011 area from U.S. Department of Agriculture, *Production, Supply, & Distribution*, electronic database, at www.fas.usda.gov/psdonline, updated 11 July 2012; and population from U.N. Population Division, *World Population Prospects: The 2010 Revision*, electronic database, at esa.un.org/unpd/wpp/index.htm, updated 3 May 2011.

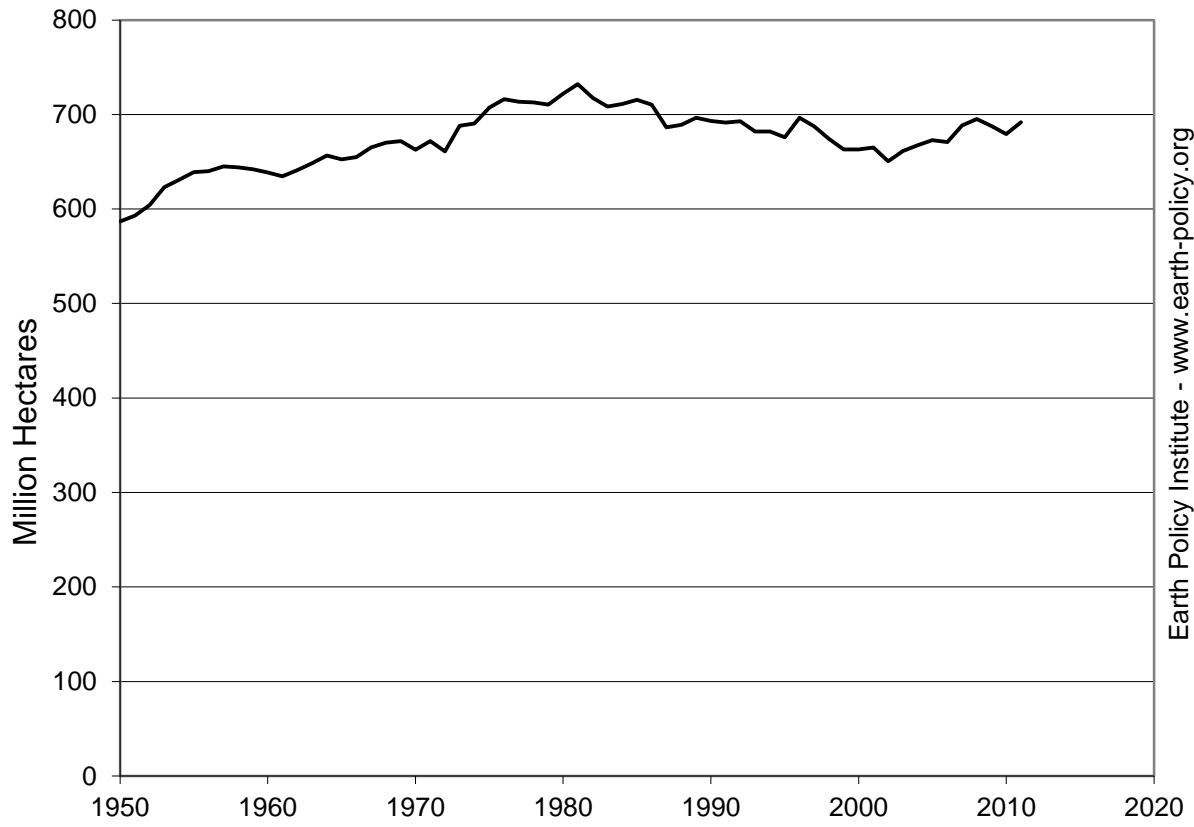
This is part of a supporting dataset for Lester R. Brown, **Full Planet, Empty Plates: The New Geopolitics of Food Scarcity** (New York: W.W. Norton & Company, 2012). For more information, see Earth Policy Institute on-line at www.earth-policy.org.

World Grain Area Harvested Per Person, 1950-2011



Source: Worldwatch; USDA, UNPop

World Grain Area Harvested, 1950-2011



Source: Worldwatch; USDA

Earth Policy Institute - www.earth-policy.org

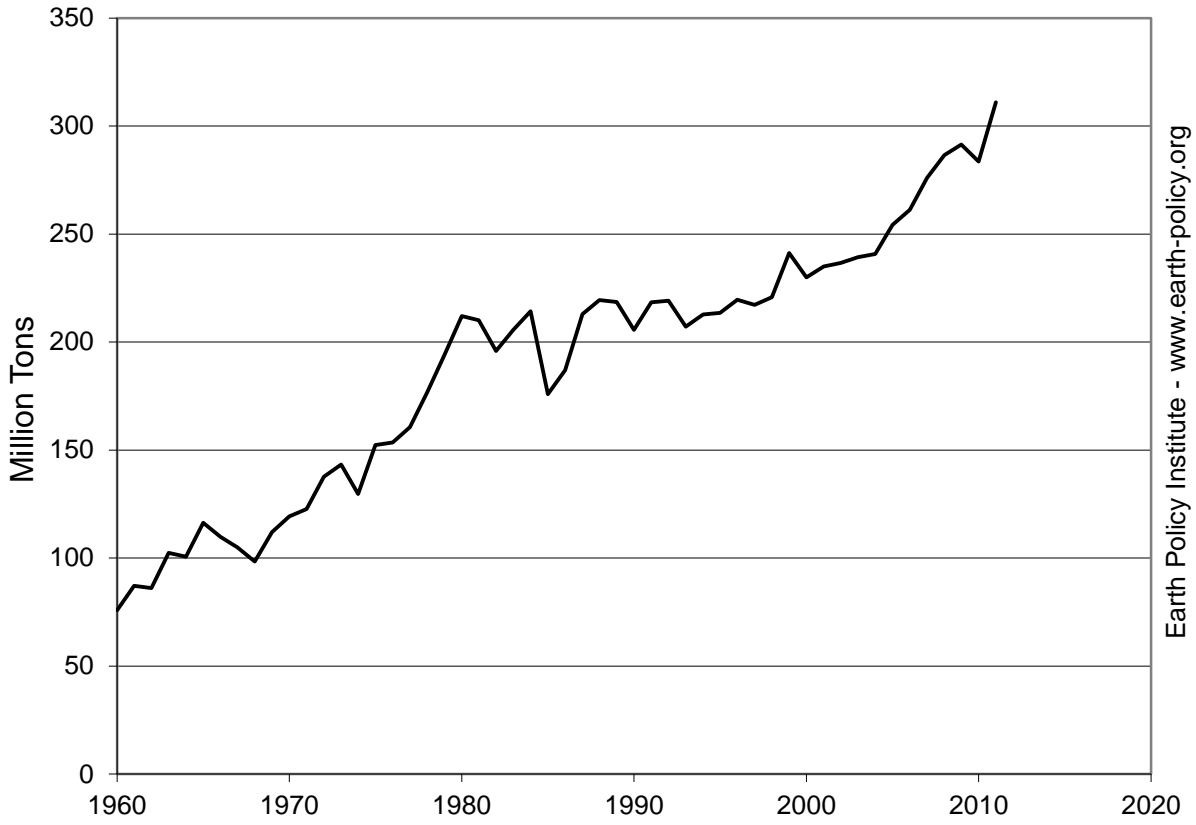
World Grain Production, Consumption, and Trade, 1960-2011

Year	Production	Consumption	Imports	Exports	Imports as a Share
					of Consumption
					Million Tons
					Percent
1960	824	815	71	76	8.7
1961	800	817	83	87	10.2
1962	850	838	81	86	9.7
1963	858	852	100	102	11.7
1964	906	896	91	101	10.2
1965	905	932	109	116	11.7
1966	988	957	108	110	11.3
1967	1,014	988	102	105	10.3
1968	1,052	1,020	96	98	9.4
1969	1,063	1,069	102	112	9.5
1970	1,079	1,108	114	119	10.3
1971	1,177	1,150	120	123	10.4
1972	1,141	1,174	133	138	11.4
1973	1,253	1,230	132	143	10.7
1974	1,203	1,190	124	130	10.4
1975	1,237	1,212	148	152	12.2
1976	1,342	1,273	145	153	11.4
1977	1,319	1,319	159	161	12.1
1978	1,445	1,380	167	177	12.1
1979	1,409	1,416	195	194	13.8
1980	1,429	1,440	202	212	14.0
1981	1,482	1,458	210	210	14.4
1982	1,533	1,475	195	196	13.2
1983	1,469	1,501	196	206	13.1
1984	1,632	1,549	211	214	13.6
1985	1,647	1,553	173	176	11.1
1986	1,664	1,601	178	187	11.1
1987	1,601	1,640	210	213	12.8
1988	1,550	1,620	212	219	13.1
1989	1,673	1,677	213	219	12.7
1990	1,769	1,707	198	206	11.6
1991	1,709	1,714	214	218	12.5
1992	1,786	1,736	209	219	12.0
1993	1,711	1,740	199	207	11.4
1994	1,757	1,762	214	213	12.1
1995	1,707	1,741	204	214	11.7
1996	1,872	1,809	206	220	11.4
1997	1,879	1,821	213	217	11.7
1998	1,877	1,835	219	221	12.0
1999	1,874	1,856	229	241	12.3
2000	1,846	1,861	224	230	12.0
2001	1,880	1,905	231	235	12.1
2002	1,821	1,909	232	237	12.2
2003	1,864	1,936	228	239	11.8
2004	2,043	1,990	237	241	11.9
2005	2,016	2,020	244	254	12.1
2006	2,005	2,045	255	261	12.5
2007	2,126	2,097	270	276	12.9
2008	2,244	2,152	276	287	12.8
2009	2,238	2,189	278	291	12.7
2010	2,197	2,227	280	284	12.6
2011	2,304	2,285	297	311	13.0

Source: Compiled by Earth Policy Institute from U.S. Department of Agriculture, *Production, Supply, & Distribution*, electronic database, at www.fas.usda.gov/psdonline, updated 11 July 2012.

This is part of a supporting dataset for Lester R. Brown, **Full Planet, Empty Plates: The New Geopolitics of Food Scarcity** (New York: W.W. Norton & Company, 2012). For more information, see Earth Policy Institute on-line at www.earth-policy.org.

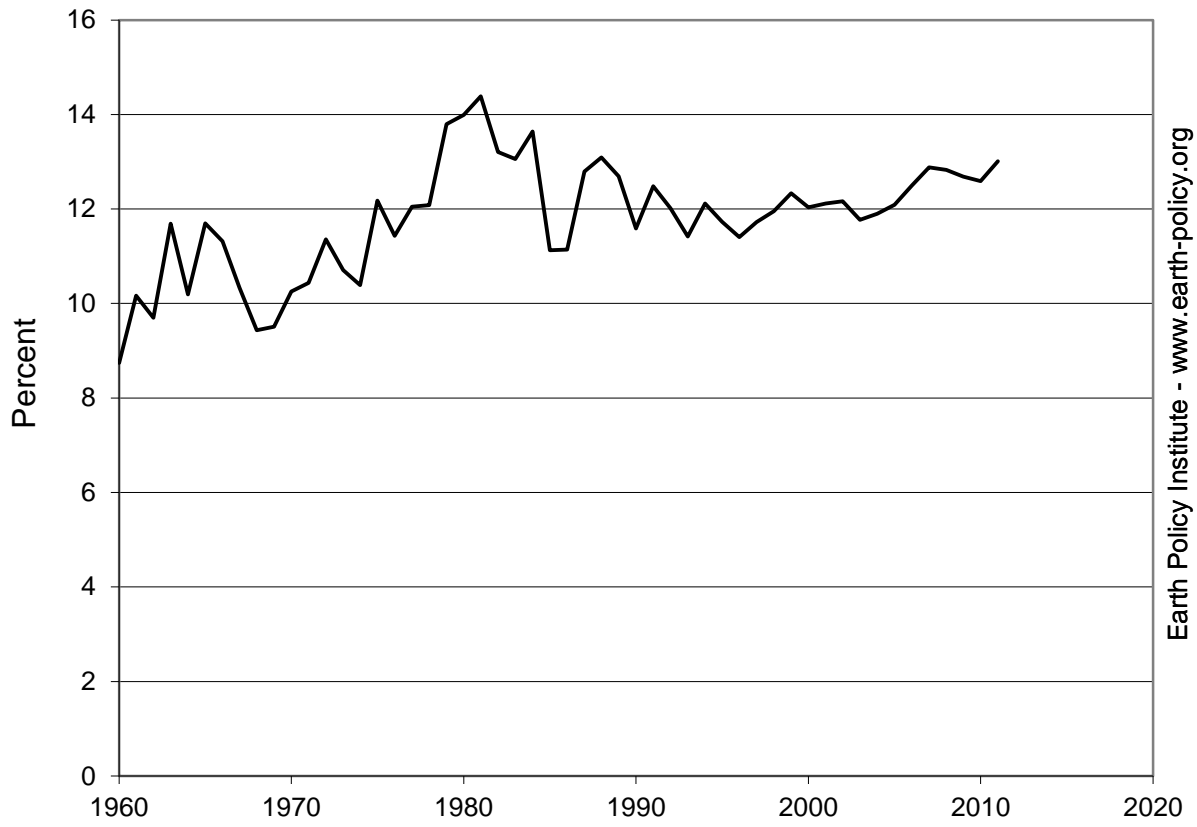
World Grain Exports, 1960-2011



Source: USDA

Earth Policy Institute - www.earth-policy.org

World Grain Imports as a Share of Consumption, 1960-2011



Source: USDA

Earth Policy Institute - www.earth-policy.org

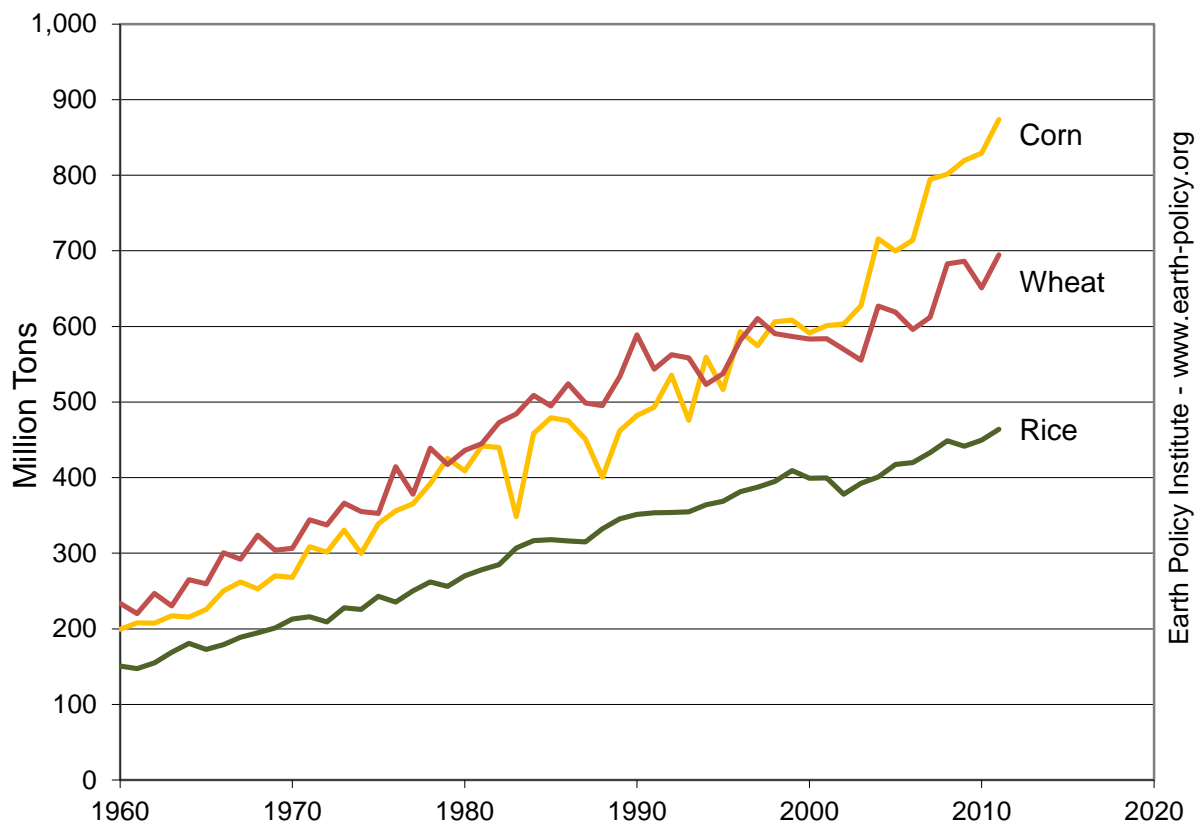
World Corn, Wheat, and Rice Production, 1960-2011

Year	Corn	Wheat	Rice
	Million Tons		
1960	200	233	151
1961	208	220	147
1962	207	247	155
1963	217	230	169
1964	215	265	181
1965	225	259	173
1966	250	301	179
1967	262	292	189
1968	252	324	195
1969	270	304	201
1970	268	307	213
1971	309	344	216
1972	301	337	209
1973	331	366	228
1974	300	355	226
1975	339	353	243
1976	356	414	235
1977	365	378	250
1978	392	439	262
1979	426	418	256
1980	409	436	270
1981	442	445	278
1982	440	473	285
1983	348	484	307
1984	458	509	317
1985	479	495	318
1986	475	524	316
1987	451	499	315
1988	400	495	332
1989	462	533	345
1990	482	589	351
1991	493	544	353
1992	536	563	354
1993	476	558	355
1994	559	523	364
1995	516	538	369
1996	593	581	381
1997	574	610	387
1998	606	590	395
1999	608	587	409
2000	591	583	399
2001	601	584	399
2002	603	570	378
2003	627	555	392
2004	716	627	401
2005	700	619	417
2006	714	596	420
2007	794	612	433
2008	801	683	449
2009	819	686	441
2010	829	651	449
2011	874	695	464

Source: Compiled by Earth Policy Institute from U.S. Department of Agriculture, *Production, Supply, & Distribution*, electronic database, at www.fas.usda.gov/psdonline, updated 11 July 2012.

This is part of a supporting dataset for Lester R. Brown, **Full Planet, Empty Plates: The New Geopolitics of Food Scarcity** (New York: W.W. Norton & Company, 2012). For more information, see Earth Policy Institute on-line at www.earth-policy.org.

World Corn, Wheat, and Rice Production, 1960-2011



Source: USDA

Earth Policy Institute - www.earth-policy.org

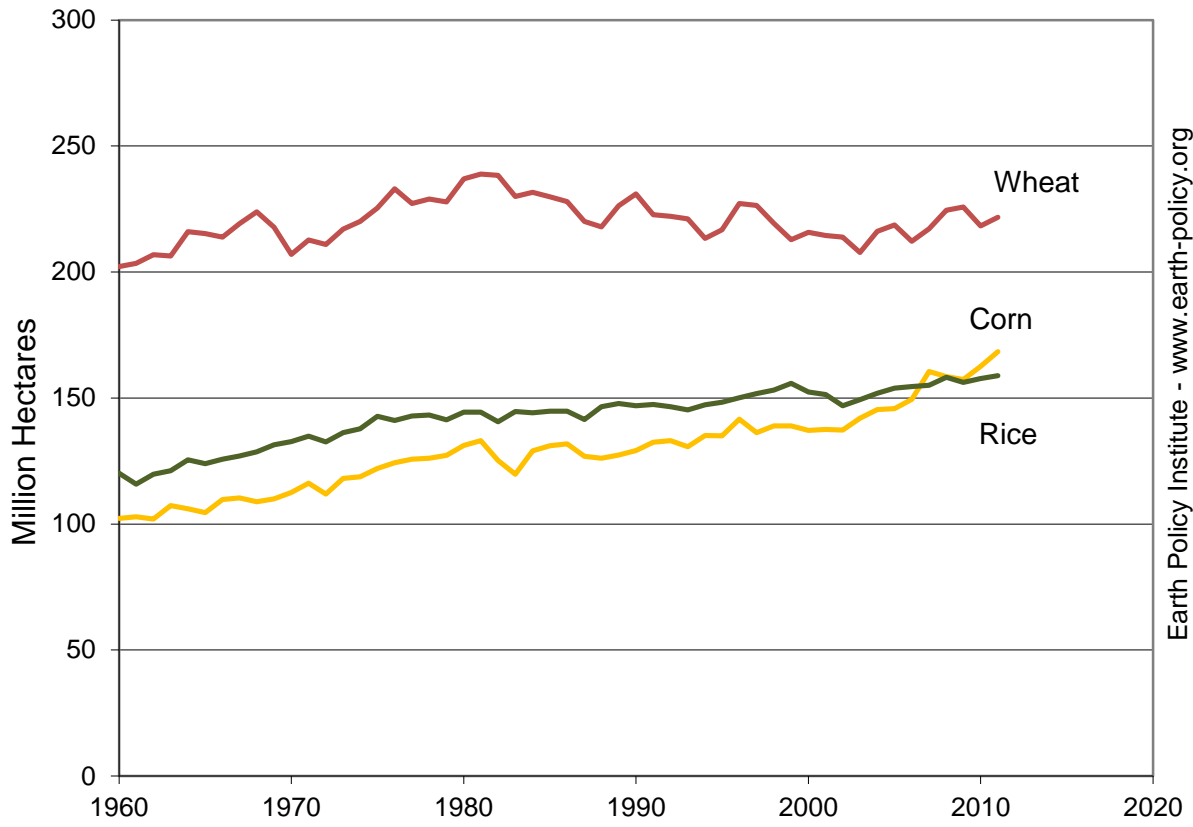
World Corn, Wheat, and Rice Area, 1960-2011

Year	Corn	Wheat	Rice
	Million Hectares		
1960	102	202	120
1961	103	203	116
1962	102	207	120
1963	107	206	121
1964	106	216	125
1965	104	215	124
1966	110	214	126
1967	110	219	127
1968	109	224	129
1969	110	218	131
1970	113	207	133
1971	116	213	135
1972	112	211	133
1973	118	217	136
1974	119	220	138
1975	122	225	143
1976	124	233	141
1977	126	227	143
1978	126	229	143
1979	127	228	141
1980	131	237	144
1981	133	239	144
1982	125	238	141
1983	120	230	145
1984	129	232	144
1985	131	230	145
1986	132	228	145
1987	127	220	141
1988	126	218	147
1989	127	226	148
1990	129	231	147
1991	132	223	147
1992	133	222	146
1993	131	221	145
1994	135	213	147
1995	135	217	148
1996	142	227	150
1997	136	226	152
1998	139	219	153
1999	139	213	156
2000	137	216	152
2001	137	215	151
2002	137	214	147
2003	142	208	149
2004	145	216	152
2005	146	219	154
2006	149	212	155
2007	160	217	155
2008	159	225	158
2009	157	226	156
2010	163	218	158
2011	168	222	159

Source: Compiled by Earth Policy Institute from U.S. Department of Agriculture, *Production, Supply, & Distribution*, electronic database, at www.fas.usda.gov/psdonline, updated 11 July 2012.

This is part of a supporting dataset for Lester R. Brown, **Full Planet, Empty Plates: The New Geopolitics of Food Scarcity** (New York: W.W. Norton & Company, 2012). For more information, see Earth Policy Institute on-line at www.earth-policy.org.

World Corn, Wheat, and Rice Area, 1960-2011



Source: USDA

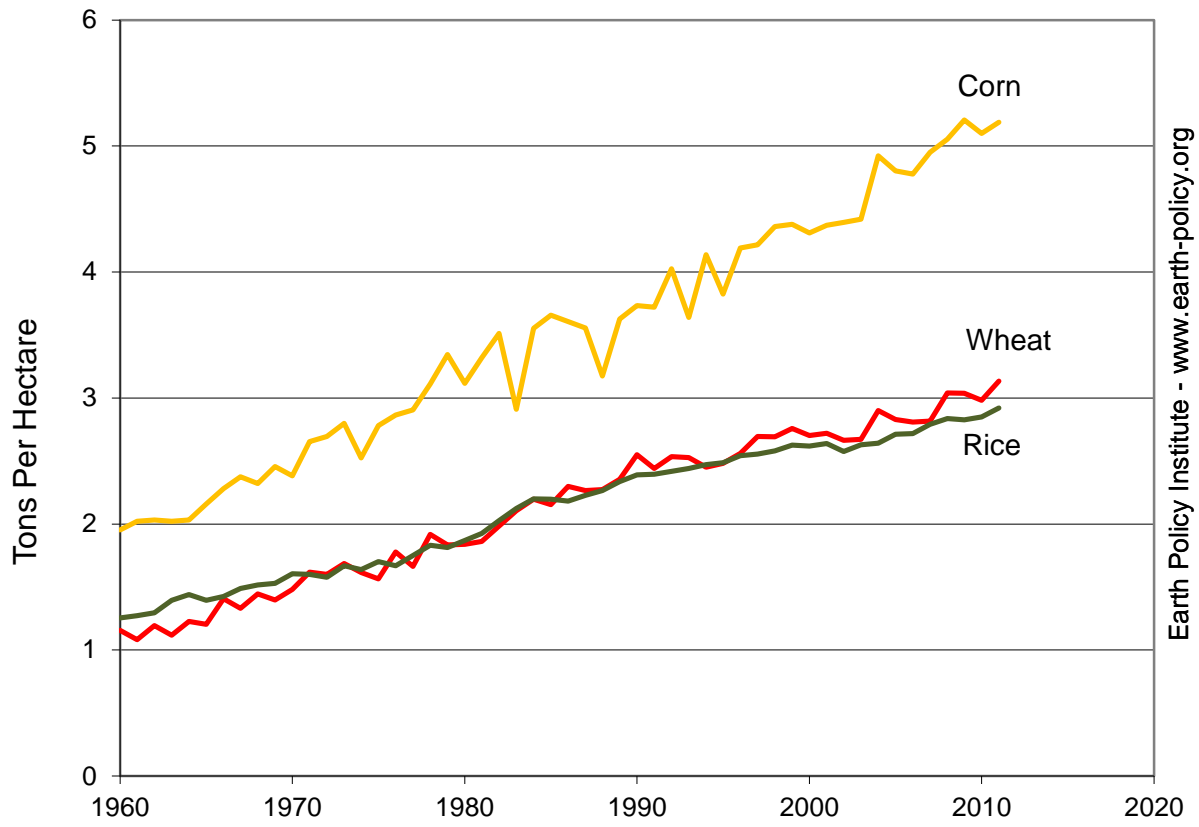
World Average Corn, Wheat, and Rice Yields, 1960-2011

Year	Corn	Wheat	Rice
	Tons Per Hectare		
1960	1.95	1.15	1.26
1961	2.02	1.08	1.27
1962	2.03	1.19	1.30
1963	2.02	1.12	1.40
1964	2.03	1.23	1.44
1965	2.16	1.20	1.39
1966	2.28	1.41	1.42
1967	2.38	1.33	1.49
1968	2.32	1.45	1.52
1969	2.46	1.40	1.53
1970	2.38	1.48	1.61
1971	2.65	1.62	1.60
1972	2.69	1.60	1.58
1973	2.80	1.69	1.67
1974	2.52	1.61	1.64
1975	2.78	1.56	1.70
1976	2.87	1.78	1.67
1977	2.91	1.66	1.75
1978	3.11	1.92	1.83
1979	3.34	1.83	1.81
1980	3.12	1.84	1.87
1981	3.32	1.86	1.92
1982	3.51	1.98	2.03
1983	2.91	2.11	2.12
1984	3.55	2.20	2.20
1985	3.66	2.15	2.20
1986	3.61	2.30	2.18
1987	3.56	2.27	2.23
1988	3.18	2.27	2.27
1989	3.63	2.36	2.34
1990	3.73	2.55	2.39
1991	3.72	2.44	2.40
1992	4.02	2.53	2.42
1993	3.64	2.53	2.44
1994	4.14	2.45	2.47
1995	3.83	2.48	2.49
1996	4.19	2.56	2.54
1997	4.22	2.69	2.55
1998	4.36	2.69	2.58
1999	4.38	2.76	2.63
2000	4.31	2.70	2.62
2001	4.37	2.72	2.64
2002	4.39	2.66	2.57
2003	4.42	2.67	2.63
2004	4.92	2.90	2.64
2005	4.80	2.83	2.71
2006	4.78	2.81	2.72
2007	4.95	2.82	2.79
2008	5.05	3.04	2.84
2009	5.21	3.04	2.83
2010	5.10	2.98	2.85
2011	5.19	3.13	2.92

Source: Compiled by Earth Policy Institute from U.S. Department of Agriculture, *Production, Supply, & Distribution*, electronic database, at www.fas.usda.gov/psdonline, updated 11 July 2012.

This is part of a supporting dataset for Lester R. Brown, **Full Planet, Empty Plates: The New Geopolitics of Food Scarcity** (New York: W.W. Norton & Company, 2012). For more information, see Earth Policy Institute on-line at www.earth-policy.org.

World Average Corn, Wheat, and Rice Yields, 1960-2011



Source: USDA

Top 10 Producers of Corn, Wheat, Rice, and Total Grain, 2011

Corn			Wheat			Rice			Total Grain		
Rank	Country	Quantity Million Tons	Rank	Country	Quantity Million Tons	Rank	Country	Quantity Million Tons	Rank	Country	Quantity Million Tons
1	United States	313.9	1	European Union	137.4	1	China	140.7	1	China	458.3
2	China	192.8	2	China	117.9	2	India	103.4	2	United States	384.0
3	Brazil	70.0	3	India	86.9	3	Indonesia	36.3	3	European Union	285.3
4	European Union	64.6	4	Russia	56.2	4	Bangladesh	34.0	4	India	232.2
5	Ukraine	22.8	5	United States	54.4	5	Vietnam	26.7	5	Russia	89.7
6	India	21.3	6	Australia	29.5	6	Thailand	20.5	6	Brazil	86.5
7	Argentina	21.0	7	Canada	25.3	7	Burma	10.8	7	Ukraine	55.6
8	Mexico	19.0	8	Pakistan	24.2	8	Philippines	10.6	8	Canada	47.1
9	South Africa	11.5	9	Kazakhstan	22.7	9	Brazil	7.9	9	Indonesia	45.0
10	Canada	10.7	10	Ukraine	22.1	10	Japan	7.6	10	Argentina	44.9
	Rest of World	126.0		Rest of World	118.1		Rest of World	65.4		Rest of World	575.8
	Total	873.7		Total	694.7		Total	463.9		Total	2,304.3

Note: Total grain includes barley, corn, millet, mixed grain, oats, rice, rye, sorghum, and wheat.

Source: Compiled by Earth Policy Institute from U.S. Department of Agriculture, *Production, Supply, & Distribution*, electronic database, at www.fas.usda.gov/psdonline, updated 11 July 2012.

This is part of a supporting dataset for Lester R. Brown, **Full Planet, Empty Plates: The New Geopolitics of Food Scarcity** (New York: W.W. Norton & Company, 2012). For more information, see Earth Policy Institute on-line at www.earth-policy.org.

Top 10 Importers of Corn, Wheat, Rice, and Total Grain, 2011

Corn			Wheat			Rice			Total Grain		
Rank	Country	Quantity Million Tons	Rank	Country	Quantity Million Tons	Rank	Country	Quantity Million Tons	Rank	Country	Quantity Million Tons
1	Japan	15.0	1	Egypt	11.2	1	Nigeria	2.5	1	Japan	24.9
2	Mexico	10.5	2	European Union	7.5	2	Iran	1.9	2	Mexico	17.6
3	South Korea	7.0	3	Brazil	7.3	3	European Union	1.6	3	Egypt	17.1
4	European Union	6.3	4	Japan	6.4	4	China	1.5	4	European Union	16.0
5	China	5.0	5	Indonesia	6.2	5	Philippines	1.5	5	Saudi Arabia	13.5
6	Egypt	5.0	6	Algeria	6.1	6	Indonesia	1.3	6	South Korea	13.1
7	Taiwan	4.2	7	South Korea	5.4	7	Iraq	1.2	7	China	11.8
8	Colombia	3.7	8	Mexico	5.1	8	Saudi Arabia	1.2	8	Algeria	9.7
9	Iran	3.6	9	Nigeria	3.9	9	Malaysia	1.1	9	Indonesia	9.5
10	Malaysia	3.1	10	Philippines	3.8	10	Cote d'Ivoire	1.0	10	Brazil	9.2
	Rest of World	30.6		Rest of World	81.9		Rest of World	18.9		Rest of World	155.1
	Total	94.0		Total	144.8		Total	33.5		Total	297.3

Note: Total grain includes barley, corn, millet, mixed grain, oats, rice, rye, sorghum, and wheat.

Source: Compiled by Earth Policy Institute from U.S. Department of Agriculture, *Production, Supply, & Distribution*, electronic database, at www.fas.usda.gov/psdonline, updated 11 July 2012.

This is part of a supporting dataset for Lester R. Brown, **Full Planet, Empty Plates: The New Geopolitics of Food Scarcity** (New York: W.W. Norton & Company, 2012). For more information, see Earth Policy Institute on-line at www.earth-policy.org.

Top 10 Exporters of Corn, Wheat, Rice, and Total Grain, 2011

Corn			Wheat			Rice			Total Grain		
Rank	Country	Quantity Million Tons	Rank	Country	Quantity Million Tons	Rank	Country	Quantity Million Tons	Rank	Country	Quantity Million Tons
1	United States	40.6	1	United States	28.5	1	India	8.0	1	United States	73.9
2	Brazil	14.0	2	Australia	23.0	2	Vietnam	7.0	2	Argentina	29.5
3	Ukraine	14.0	3	Russia	21.3	3	Thailand	6.5	3	Australia	29.3
4	Argentina	13.0	4	Canada	17.3	4	Pakistan	3.8	4	Russia	27.3
5	India	3.8	5	European Union	16.2	5	United States	3.2	5	European Union	22.8
6	European Union	3.1	6	Kazakhstan	11.0	6	Uruguay	0.9	6	Ukraine	21.8
7	Russia	2.2	7	Argentina	10.8	7	Brazil	0.9	7	Canada	20.6
8	Serbia	1.7	8	Ukraine	5.0	8	Cambodia	0.8	8	Brazil	16.9
9	South Africa	1.5	9	Turkey	3.6	9	Argentina	0.7	9	India	12.6
10	Paraguay	1.3	10	Brazil	2.0	10	Burma	0.6	10	Kazakhstan	11.9
	Rest of World	3.6		Rest of World	11.7		Rest of World	3.0		Rest of World	44.6
	Total	98.8		Total	150.4		Total	35.3		Total	311.0

Note: Total grain includes barley, corn, millet, mixed grain, oats, rice, rye, sorghum, and wheat.

Source: Compiled by Earth Policy Institute from U.S. Department of Agriculture, *Production, Supply, & Distribution*, electronic database, at www.fas.usda.gov/psdonline, updated 11 July 2012.

This is part of a supporting dataset for Lester R. Brown, **Full Planet, Empty Plates: The New Geopolitics of Food Scarcity** (New York: W.W. Norton & Company, 2012). For more information, see Earth Policy Institute on-line at www.earth-policy.org.

Top 10 Consumers of Corn, Wheat, Rice, and Total Grain, 2011

Corn			Wheat			Rice			Total Grain		
Rank	Country	Quantity Million Tons	Rank	Country	Quantity Million Tons	Rank	Country	Quantity Million Tons	Rank	Country	Quantity Million Tons
1	United States	279.5	1	European Union	126.8	1	China	139.5	1	China	456.6
2	China	188.0	2	China	120.5	2	India	93.9	2	United States	326.8
3	European Union	67.5	3	India	81.6	3	Indonesia	39.3	3	European Union	280.1
4	Brazil	54.0	4	Russia	38.5	4	Bangladesh	34.5	4	India	213.9
5	Mexico	29.7	5	United States	32.3	5	Vietnam	19.8	5	Brazil	76.6
6	India	17.6	6	Pakistan	23.1	6	Philippines	12.8	6	Russia	66.8
7	Japan	15.0	7	Egypt	18.9	7	Thailand	10.4	7	Indonesia	55.6
8	Canada	10.8	8	Turkey	18.1	8	Burma	10.1	8	Mexico	47.1
9	Egypt	10.8	9	Iran	15.5	9	Brazil	8.1	9	Bangladesh	38.7
10	South Africa	10.7	10	Ukraine	15.0	10	Japan	8.1	10	Egypt	34.9
	Rest of World	180.2		Rest of World	199.0		Rest of World	80.2		Rest of World	687.8
	Total	863.8		Total	689.1		Total	456.6		Total	2,284.6

Note: Total grain includes barley, corn, millet, mixed grain, oats, rice, rye, sorghum, and wheat.

Source: Compiled by Earth Policy Institute from U.S. Department of Agriculture, *Production, Supply, & Distribution*, electronic database, at www.fas.usda.gov/psdonline, updated 11 July 2012.

This is part of a supporting dataset for Lester R. Brown, **Full Planet, Empty Plates: The New Geopolitics of Food Scarcity** (New York: W.W. Norton & Company, 2012). For more information, see Earth Policy Institute on-line at www.earth-policy.org.

Grain Area Harvested Per Person in Selected Countries and the World in 1950 and 2010, with Projection to 2050

	Area		
	1950	2010	2050
	Hectares		
Afghanistan	0.36	0.09	0.04
Australia	0.74	0.86	0.61
Bangladesh	0.23	0.08	0.06
Brazil	0.13	0.10	0.09
Canada	1.42	0.38	0.30
China	0.16	0.07	0.07
Democratic Republic of the Congo	0.05	0.03	0.01
Egypt	0.08	0.03	0.02
Ethiopia	0.26	0.08	0.05
France	0.21	0.16	0.13
India	0.22	0.08	0.06
Indonesia	0.10	0.06	0.05
Iran	0.21	0.13	0.11
Iraq	0.43	0.10	0.04
Japan	0.06	0.01	0.02
Malaysia	0.09	0.02	0.02
Mexico	0.19	0.09	0.07
Nepal	0.19	0.11	0.07
Nigeria	0.25	0.12	0.05
North Korea	0.14	0.05	0.05
Pakistan	0.20	0.08	0.05
Philippines	0.17	0.08	0.05
Rwanda	0.06	0.03	0.01
South Africa	0.36	0.09	0.08
South Korea	0.10	0.02	0.02
Sri Lanka	0.06	0.05	0.05
Sudan	0.16	0.20	0.09
Tanzania	0.07	0.11	0.04
Thailand	0.27	0.17	0.16
Turkey	0.40	0.17	0.13
Uganda	0.15	0.05	0.02
United Kingdom	0.07	0.05	0.04
United States	0.51	0.18	0.14
Vietnam	0.14	0.10	0.08
Yemen	0.21	0.04	0.02
World Average	0.23	0.10	0.07

Note: 2010 grain area used for 2050 projection.

Source: Compiled by Earth Policy Institute with grain area for 1950 from U.S. Department of Agriculture (USDA), *Production, Supply and Distribution (PS&D)*, Country Reports, October 1990; 2010 grain data for France and the United Kingdom from USDA, Foreign Agricultural Service, *World Agricultural Production* (Washington, DC: 23 February 2012); all other 2010 grain data from USDA, *PS&D*, electronic database, updated 11 September 2012; population data for 2010 and projection from U.N. Population Division, *World Population Prospects: The 2010 Revision Population Database*, electronic database, at esa.un.org/unpd/wpp/index.htm, updated 3 May 2011.

This is part of a supporting dataset for Lester R. Brown, **Full Planet, Empty Plates: The New Geopolitics of Food Scarcity** (New York: W.W. Norton & Company, 2012). For more information, see Earth Policy Institute online at www.earth-policy.org.

World Monthly Food Price Indices, January 1990 – August 2012

Date	Meat	Dairy	Grains	Oils	Sugar	Total Food
			2002-2004 = 100			
Jan-1990	108.1	93.1	106.6	72.5	201.5	106.9
Feb-1990	113.1	90.8	104.4	72.5	207.9	108.1
Mar-1990	115.4	72.7	102.7	74.3	218.0	106.4
Apr-1990	127.5	84.3	105.6	71.8	216.3	112.8
May-1990	127.4	69.1	105.5	74.0	207.2	109.9
Jun-1990	127.9	69.1	103.3	71.3	184.0	107.4
Jul-1990	126.3	69.1	97.3	71.2	170.1	104.2
Aug-1990	123.8	65.1	93.4	73.7	155.1	100.9
Sep-1990	131.5	67.3	87.8	72.9	157.1	102.4
Oct-1990	130.0	68.7	88.9	74.5	139.3	101.4
Nov-1990	127.0	69.7	88.2	78.3	142.9	101.1
Dec-1990	130.0	79.1	88.9	80.5	138.2	103.9
Jan-1991	128.0	82.5	90.4	79.8	124.9	103.1
Feb-1991	133.9	81.8	92.1	77.9	120.8	105.0
Mar-1991	126.6	80.1	95.0	78.3	129.7	103.6
Apr-1991	122.2	75.1	96.5	76.1	120.8	100.7
May-1991	123.3	73.9	95.5	75.1	107.6	99.5
Jun-1991	121.8	75.8	94.6	75.4	130.6	100.8
Jul-1991	121.4	70.4	93.6	77.6	146.3	100.9
Aug-1991	120.2	72.8	97.9	79.3	134.2	101.4
Sep-1991	123.1	79.3	98.8	79.1	131.8	103.6
Oct-1991	126.2	85.4	102.1	83.2	129.4	106.9
Nov-1991	131.0	88.9	102.5	83.6	122.9	108.9
Dec-1991	127.1	88.9	105.7	84.3	127.7	108.8
Jan-1992	125.6	92.0	107.8	84.8	118.1	108.8
Feb-1992	129.6	92.0	111.2	82.9	111.3	110.4
Mar-1992	124.2	91.3	110.9	85.9	116.6	109.1
Apr-1992	123.5	91.3	105.8	85.5	134.2	108.7
May-1992	125.3	94.9	104.6	86.0	136.1	109.8
Jun-1992	126.8	100.0	103.8	87.3	147.0	111.9
Jul-1992	125.7	100.9	99.0	82.7	146.3	109.7
Aug-1992	126.6	98.8	94.3	80.8	139.5	107.6
Sep-1992	124.5	101.6	97.8	82.8	132.1	108.1
Oct-1992	122.8	95.9	97.7	82.9	123.6	105.9
Nov-1992	128.0	93.6	98.9	85.5	121.6	107.9
Dec-1992	119.9	92.7	97.7	84.0	115.7	103.9
Jan-1993	121.9	92.5	98.8	85.2	116.9	105.2
Feb-1993	121.4	93.7	97.5	85.0	121.5	105.1
Mar-1993	121.2	92.5	97.3	83.6	150.7	106.7
Apr-1993	117.7	91.0	96.4	83.2	158.2	105.5
May-1993	119.0	89.8	93.4	82.4	167.9	105.5
Jun-1993	119.7	89.9	88.9	81.8	147.4	103.0
Jul-1993	118.8	86.4	94.1	85.7	137.4	103.3
Aug-1993	114.9	83.3	95.6	84.5	132.5	101.3
Sep-1993	116.2	78.6	98.5	84.2	135.4	101.9
Oct-1993	117.7	71.7	104.2	83.5	146.0	103.5
Nov-1993	116.7	72.1	113.2	90.2	143.6	106.5
Dec-1993	111.7	73.1	116.6	101.9	149.3	107.9
Jan-1994	112.9	79.4	116.0	102.8	146.2	109.1
Feb-1994	113.4	79.3	113.3	97.6	153.5	108.3
Mar-1994	112.1	80.2	108.7	98.8	166.6	107.9
Apr-1994	111.3	73.4	105.8	101.7	156.2	105.3
May-1994	117.7	73.4	104.4	107.2	164.3	108.5
Jun-1994	114.5	78.0	101.6	107.8	171.0	108.0
Jul-1994	114.7	78.7	94.5	105.8	167.0	105.7
Aug-1994	117.2	80.4	96.7	114.6	171.7	109.0
Sep-1994	117.1	86.6	101.6	125.8	178.7	113.4
Oct-1994	116.9	90.3	103.8	123.4	180.9	114.4
Nov-1994	119.0	92.2	102.7	137.5	197.8	118.4
Dec-1994	113.3	95.5	105.4	138.2	208.2	118.5
Jan-1995	111.4	103.0	105.9	129.8	209.4	118.2
Feb-1995	118.8	106.2	105.0	128.9	204.5	120.5
Mar-1995	121.0	107.2	104.4	130.8	207.0	121.8
Apr-1995	117.2	106.3	105.3	121.5	194.4	118.3
May-1995	115.8	106.5	109.6	119.5	191.9	118.6
Jun-1995	113.0	106.5	116.6	124.8	198.9	120.8
Jul-1995	119.2	112.7	124.8	129.9	192.8	126.5
Aug-1995	118.4	112.7	122.3	124.9	184.2	124.2

Date	Meat	Dairy	Grains	Oils	Sugar	Total Food
Sep-1995	123.1	112.8	127.8	120.3	165.9	125.3
Oct-1995	124.9	113.9	135.2	125.8	168.0	129.1
Nov-1995	121.5	113.9	135.4	124.5	170.0	127.9
Dec-1995	116.9	113.4	138.9	119.2	174.7	126.8
Jan-1996	124.1	113.3	140.0	112.3	177.8	128.8
Feb-1996	123.2	113.0	143.7	108.8	181.8	129.3
Mar-1996	126.8	111.5	146.2	107.7	183.2	130.8
Apr-1996	124.7	111.3	160.2	116.2	170.0	134.1
May-1996	130.7	108.5	167.9	116.6	161.6	137.3
Jun-1996	130.0	108.8	158.6	110.2	172.7	134.5
Jul-1996	129.7	109.0	153.0	106.5	181.8	133.1
Aug-1996	134.0	108.2	144.8	110.8	175.5	132.3
Sep-1996	133.3	107.6	126.5	114.1	169.1	127.0
Oct-1996	130.0	108.5	120.0	109.6	157.8	122.8
Nov-1996	127.9	106.3	114.2	110.6	152.1	119.9
Dec-1996	126.6	106.6	114.7	111.0	152.4	119.7
Jan-1997	121.6	106.8	114.8	112.5	151.7	118.1
Feb-1997	125.1	105.7	115.6	113.3	153.4	119.6
Mar-1997	130.0	105.3	119.1	111.4	157.7	122.3
Apr-1997	129.8	103.9	119.6	111.9	160.4	122.4
May-1997	131.6	104.3	116.1	112.6	158.1	122.0
Jun-1997	125.7	103.6	109.8	109.6	162.2	118.0
Jul-1997	123.8	102.6	105.2	104.8	159.2	115.1
Aug-1997	123.0	102.4	110.7	104.7	166.0	116.7
Sep-1997	120.3	104.4	109.9	108.7	160.8	116.1
Oct-1997	118.8	107.1	111.1	116.9	161.9	117.6
Nov-1997	118.5	107.6	109.0	123.3	170.5	118.5
Dec-1997	109.9	107.7	107.6	120.4	175.0	115.1
Jan-1998	107.2	107.6	106.3	124.6	163.9	113.6
Feb-1998	108.3	105.6	106.3	127.3	152.1	113.2
Mar-1998	109.3	102.6	106.9	131.0	139.6	112.8
Apr-1998	108.2	102.2	103.0	133.0	137.5	111.4
May-1998	104.1	100.2	102.0	139.3	131.0	109.8
Jun-1998	104.8	98.7	100.2	129.2	114.9	106.7
Jul-1998	100.8	98.5	97.5	129.3	122.6	105.1
Aug-1998	99.5	98.7	91.7	128.2	120.3	102.8
Sep-1998	99.3	95.9	91.5	130.1	102.6	101.2
Oct-1998	99.3	92.9	97.9	130.1	105.9	102.7
Nov-1998	98.1	92.9	98.8	130.2	114.4	103.1
Dec-1998	99.5	93.1	96.6	126.7	114.6	102.6
Jan-1999	97.7	93.0	97.2	119.3	115.1	101.1
Feb-1999	98.1	91.8	93.6	105.9	96.8	96.8
Mar-1999	98.4	90.7	94.0	96.5	85.4	94.7
Apr-1999	95.9	85.8	91.8	100.5	76.9	92.4
May-1999	96.1	84.9	90.3	96.8	81.6	91.7
Jun-1999	96.7	84.6	91.4	86.6	85.6	91.0
Jul-1999	97.8	83.1	88.1	77.9	76.3	88.3
Aug-1999	100.3	83.1	90.6	83.5	81.6	91.1
Sep-1999	98.7	83.8	89.9	86.0	94.6	91.7
Oct-1999	98.3	84.0	87.6	84.5	96.1	90.9
Nov-1999	98.9	84.7	87.0	81.9	92.2	90.4
Dec-1999	96.5	86.3	85.3	79.4	85.3	88.5
Jan-2000	93.3	88.8	87.6	77.5	79.6	87.8
Feb-2000	98.5	89.2	88.8	73.7	75.1	89.1
Mar-2000	99.5	88.6	87.3	75.2	72.9	89.0
Apr-2000	96.9	89.0	86.8	77.3	85.4	89.2
May-2000	96.8	89.7	87.1	70.0	98.1	89.3
Jun-2000	97.4	93.9	83.2	67.4	118.8	90.3
Jul-2000	96.7	97.2	79.2	67.0	136.7	90.7
Aug-2000	94.7	97.9	78.4	65.3	148.1	90.5
Sep-2000	93.4	100.2	81.4	60.7	142.3	90.2
Oct-2000	92.7	102.9	85.5	58.3	152.5	91.9
Nov-2000	93.0	103.6	86.9	60.3	140.9	91.9
Dec-2000	96.7	104.4	90.1	61.0	142.2	94.4
Jan-2001	90.1	103.9	90.0	59.9	146.5	92.2
Feb-2001	96.0	103.5	88.4	57.8	140.1	93.0
Mar-2001	100.7	104.7	87.4	60.8	131.6	94.3
Apr-2001	99.4	104.9	85.0	60.4	124.1	92.7
May-2001	100.1	109.2	84.9	58.2	136.0	94.2
Jun-2001	97.0	109.8	84.4	61.8	128.3	93.0
Jul-2001	96.6	110.6	87.6	75.4	124.8	95.5
Aug-2001	97.2	109.6	86.6	79.6	115.1	95.2
Sep-2001	97.9	109.0	85.7	72.9	108.4	93.7
Oct-2001	95.8	110.7	85.2	69.4	96.4	91.7

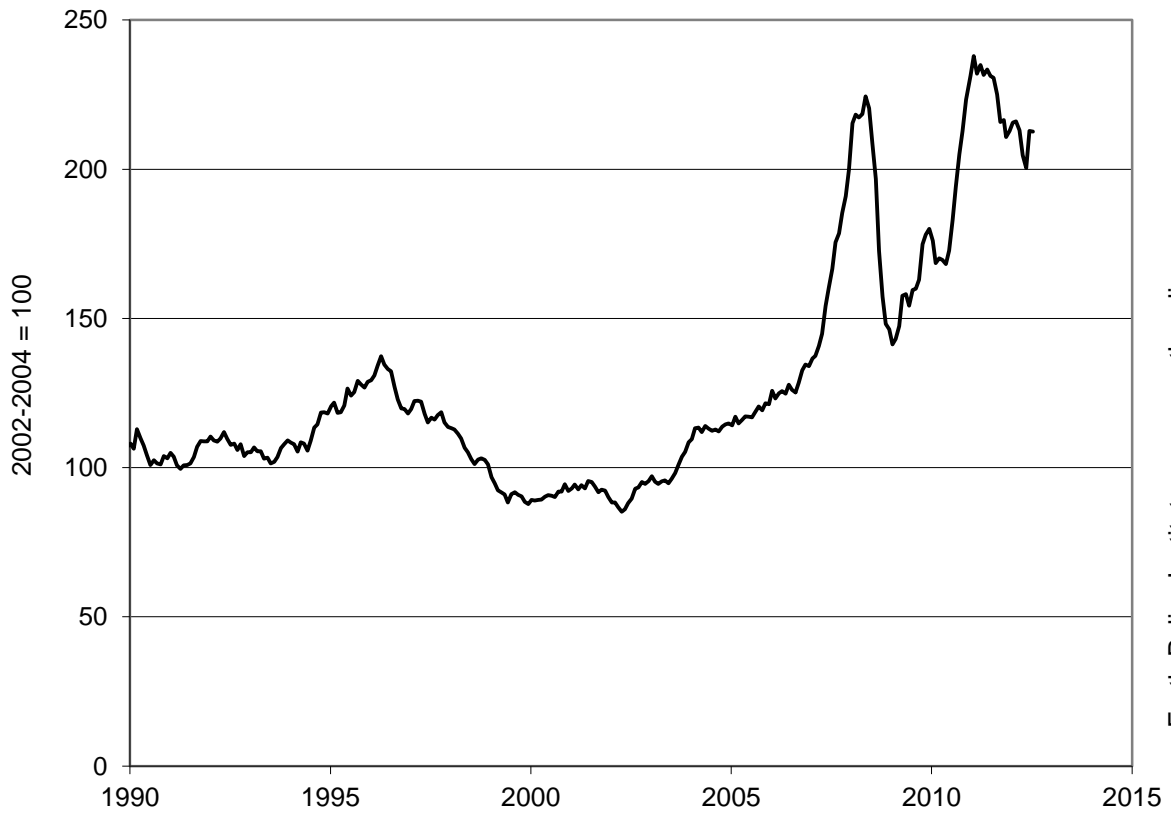
Date	Meat	Dairy	Grains	Oils	Sugar	Total Food
Nov-2001	93.8	107.3	86.5	75.7	108.9	92.6
Dec-2001	93.4	101.5	86.8	79.2	111.1	92.2
Jan-2002	91.4	94.8	87.0	77.2	110.5	90.1
Feb-2002	92.1	94.8	85.1	74.8	92.9	88.3
Mar-2002	94.4	91.2	84.3	74.5	95.0	88.3
Apr-2002	91.2	88.2	82.4	76.9	97.7	86.7
May-2002	89.6	80.7	84.3	80.9	86.2	85.2
Jun-2002	90.1	76.3	87.1	87.8	81.6	86.0
Jul-2002	90.7	72.7	93.3	88.8	90.6	88.1
Aug-2002	88.3	71.7	100.2	93.9	89.3	89.6
Sep-2002	88.2	73.9	110.7	90.0	98.8	92.9
Oct-2002	86.3	75.8	109.8	93.4	106.6	93.4
Nov-2002	86.8	80.5	107.4	101.5	111.1	95.1
Dec-2002	85.5	86.4	101.3	104.4	112.8	94.6
Jan-2003	89.1	89.3	98.5	102.0	116.2	95.5
Feb-2003	91.2	92.7	98.4	99.0	127.7	97.2
Mar-2003	91.3	93.8	95.8	95.0	116.8	95.3
Apr-2003	91.2	92.0	95.5	95.6	110.0	94.5
May-2003	93.2	91.7	97.5	97.8	101.7	95.4
Jun-2003	96.0	91.6	95.8	99.6	95.4	95.7
Jul-2003	96.6	92.7	92.8	95.2	97.1	94.8
Aug-2003	97.7	93.6	97.7	92.7	96.9	96.3
Sep-2003	102.8	96.5	97.6	96.9	84.9	98.2
Oct-2003	102.7	100.6	98.5	109.2	84.6	100.8
Nov-2003	104.5	102.4	103.7	111.4	86.3	103.6
Dec-2003	104.9	104.5	105.4	115.2	89.2	105.3
Jan-2004	112.2	106.8	108.1	115.4	82.4	108.5
Feb-2004	107.8	113.0	110.7	121.4	82.9	109.6
Mar-2004	111.9	114.7	114.8	122.8	91.6	113.2
Apr-2004	109.1	115.7	117.7	123.2	93.3	113.4
May-2004	107.9	119.1	115.4	117.8	90.0	111.9
Jun-2004	116.9	124.2	111.7	106.9	98.3	114.0
Jul-2004	116.9	127.4	103.1	105.8	112.3	113.0
Aug-2004	117.4	127.7	100.6	106.7	107.5	112.4
Sep-2004	116.7	128.8	101.7	107.3	109.1	112.8
Oct-2004	113.6	129.6	100.7	105.7	119.9	112.1
Nov-2004	116.3	131.8	102.2	107.2	115.8	113.7
Dec-2004	117.4	132.9	103.1	105.7	117.1	114.4
Jan-2005	117.8	133.6	104.1	101.5	123.7	114.9
Feb-2005	116.3	134.3	102.6	99.8	129.2	114.2
Mar-2005	119.7	135.0	105.1	107.5	126.0	117.0
Apr-2005	119.1	133.6	100.7	105.4	121.9	114.8
May-2005	123.6	134.2	99.8	103.8	121.8	116.0
Jun-2005	123.8	133.9	101.8	104.6	128.4	117.1
Jul-2005	120.5	135.1	103.0	103.8	136.8	117.0
Aug-2005	120.3	137.3	101.8	100.7	141.0	116.9
Sep-2005	121.3	138.0	104.7	102.6	146.3	118.8
Oct-2005	120.2	137.6	107.1	107.3	157.8	120.4
Nov-2005	119.0	136.7	104.7	105.0	161.5	119.2
Dec-2005	120.3	134.9	107.1	101.8	189.4	121.5
Jan-2006	113.7	130.3	107.9	102.2	223.5	121.2
Feb-2006	116.5	130.5	111.6	103.8	254.6	125.7
Mar-2006	113.6	128.0	110.1	104.0	244.7	123.2
Apr-2006	116.7	125.4	112.2	105.8	248.2	124.9
May-2006	116.5	124.9	116.4	108.7	238.7	125.6
Jun-2006	119.1	124.6	115.8	108.6	218.5	124.8
Jul-2006	120.5	125.0	120.1	112.8	227.8	127.8
Aug-2006	123.6	123.2	118.4	117.0	190.9	126.0
Sep-2006	122.8	123.3	123.0	113.9	171.5	125.2
Oct-2006	121.4	125.9	135.7	115.7	165.2	128.4
Nov-2006	119.4	132.3	144.5	124.9	167.1	132.6
Dec-2006	118.1	142.2	144.2	132.2	164.2	134.5
Jan-2007	116.8	146.3	144.0	131.4	155.4	134.0
Feb-2007	117.2	153.1	149.5	132.7	150.0	136.6
Mar-2007	117.2	159.3	148.2	135.1	148.1	137.4
Apr-2007	118.8	175.7	144.5	147.3	137.9	140.7
May-2007	122.7	181.1	146.5	158.7	133.8	144.8
Jun-2007	126.3	209.0	155.2	166.6	131.8	154.1
Jul-2007	127.0	234.1	155.2	172.2	144.3	160.3
Aug-2007	130.1	245.7	165.8	177.6	139.1	166.6
Sep-2007	132.2	252.4	187.7	185.9	138.4	175.5
Oct-2007	128.3	257.1	193.9	197.5	141.9	178.5
Nov-2007	132.8	268.6	196.5	215.8	143.3	185.4
Dec-2007	131.7	266.2	215.8	219.6	152.0	191.0

Date	Meat	Dairy	Grains	Oils	Sugar	Total Food
Jan-2008	136.6	255.7	231.3	243.3	170.0	199.8
Feb-2008	137.8	252.1	271.4	267.0	191.7	215.4
Mar-2008	143.5	248.7	271.5	279.4	187.3	218.3
Apr-2008	148.1	241.7	274.1	269.5	178.2	217.3
May-2008	157.8	239.9	266.8	273.5	171.3	218.5
Jun-2008	164.4	240.6	273.5	284.9	172.1	224.4
Jul-2008	168.2	238.9	256.5	267.1	201.9	220.4
Aug-2008	170.4	227.2	239.4	223.7	207.3	208.9
Sep-2008	169.8	203.2	225.8	201.7	192.0	196.7
Oct-2008	160.9	185.0	190.4	154.2	168.9	172.6
Nov-2008	146.0	159.6	178.2	134.6	171.7	157.3
Dec-2008	135.3	142.0	174.3	127.3	166.7	148.1
Jan-2009	126.4	122.2	184.5	134.4	177.5	146.3
Feb-2009	120.4	114.3	177.3	131.8	187.7	141.3
Mar-2009	124.1	117.7	177.7	129.5	190.2	143.1
Apr-2009	127.6	117.4	178.9	147.8	193.7	147.4
May-2009	133.4	123.7	185.5	167.8	227.8	157.6
Jun-2009	137.3	122.8	185.3	160.6	233.1	158.1
Jul-2009	139.5	125.9	167.0	144.7	261.5	154.2
Aug-2009	140.0	129.3	162.0	157.3	318.4	159.5
Sep-2009	138.4	144.0	157.7	150.6	326.9	159.9
Oct-2009	134.4	157.5	166.1	152.9	321.3	163.0
Nov-2009	137.5	208.1	170.9	162.9	315.9	174.9
Dec-2009	136.1	215.6	171.0	170.6	334.0	178.1
Jan-2010	140.5	202.0	170.2	170.0	375.5	180.0
Feb-2010	142.0	191.4	164.2	170.2	360.8	176.1
Mar-2010	144.8	187.4	157.7	175.8	264.8	168.5
Apr-2010	150.8	204.3	154.8	174.5	233.4	170.2
May-2010	151.7	209.2	155.1	171.3	215.7	169.6
Jun-2010	152.4	203.1	151.2	169.3	224.9	168.2
Jul-2010	151.0	197.8	163.3	175.8	247.4	172.7
Aug-2010	155.5	192.9	185.2	193.8	262.7	183.0
Sep-2010	153.4	198.4	208.3	199.0	318.1	194.2
Oct-2010	157.8	202.6	219.9	221.5	349.3	205.0
Nov-2010	160.8	207.8	223.3	244.8	373.4	212.9
Dec-2010	166.1	208.4	237.8	264.5	398.4	223.3
Jan-2011	166.8	221.3	244.8	279.4	420.2	231.3
Feb-2011	170.5	230.0	258.6	281.1	418.2	237.9
Mar-2011	174.5	234.4	251.2	261.7	372.3	232.0
Apr-2011	180.4	228.7	265.4	260.9	345.7	234.9
May-2011	180.0	231.1	261.3	260.9	312.2	231.6
Jun-2011	178.1	231.6	259.0	259.0	357.7	233.4
Jul-2011	176.5	227.8	247.2	252.9	400.4	231.2
Aug-2011	178.6	220.6	252.4	245.3	393.7	230.6
Sep-2011	177.3	214.7	244.3	239.4	379.0	225.1
Oct-2011	176.1	203.5	231.3	224.3	361.2	215.8
Nov-2011	181.1	201.0	228.8	234.8	339.9	216.4
Dec-2011	178.8	201.7	217.6	227.5	326.9	210.8
Jan-2012	174.2	206.8	222.7	233.7	334.3	212.8
Feb-2012	178.1	202.0	226.3	238.7	342.3	215.6
Mar-2012	178.0	197.0	227.8	244.9	341.9	216.0
Apr-2012	179.6	185.6	223.3	251.0	324.0	213.0
May-2012	175.0	176.1	221.3	233.8	294.6	204.7
Jun-2012	169.5	173.4	222.1	220.7	290.4	200.4
Jul-2012	166.5	172.9	260.0	226.1	324.3	212.8
Aug-2012	170.3	175.6	260.3	226.0	296.6	212.6

Source: Compiled by Earth Policy Institute from U.N. Food and Agriculture Organization, "FAO Food Price Index," at www.fao.org/worldfoodsituation/wfs-home/foodpricesindex/en, updated 6 September 2012.

This is part of a supporting dataset for Lester R. Brown, **Full Planet, Empty Plates: The New Geopolitics of Food Scarcity** (New York: W.W. Norton & Company, 2012). For more information, see Earth Policy Institute online at www.earth-policy.org.

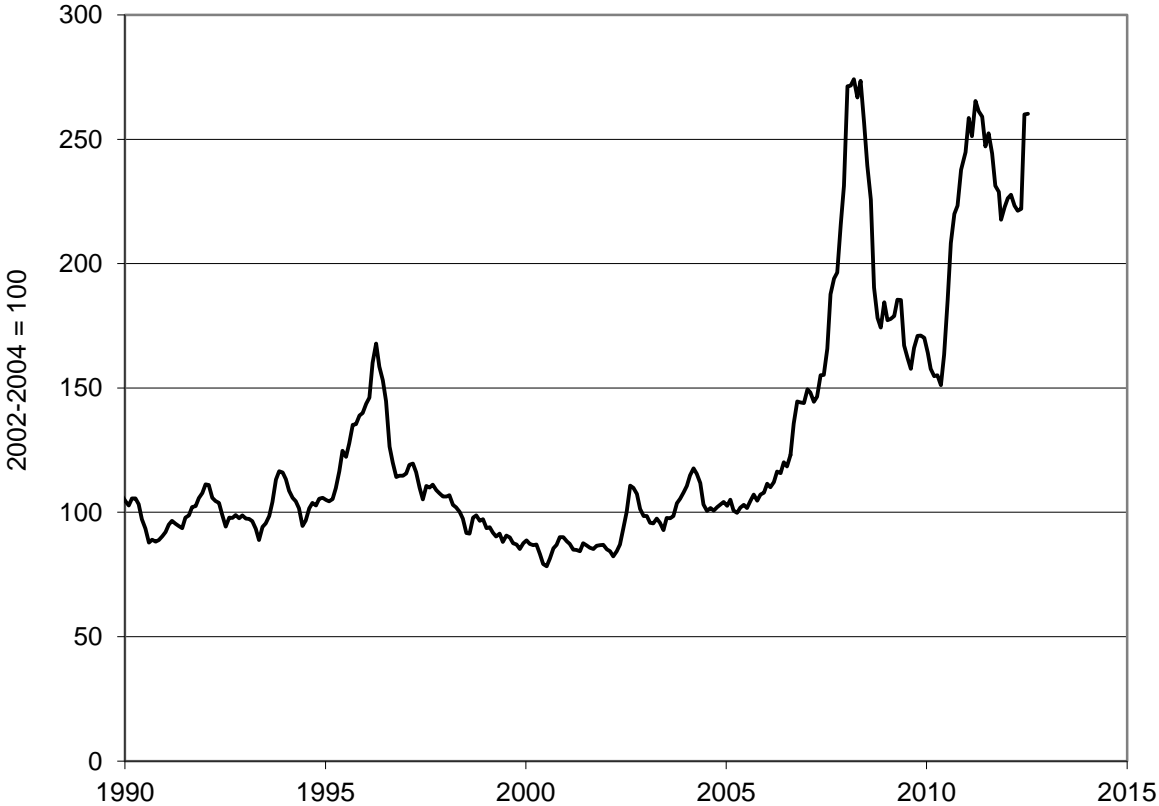
World Monthly Food Price Index, January 1990 - August 2012



Source: FAO

Earth Policy Institute - www.earth-policy.org

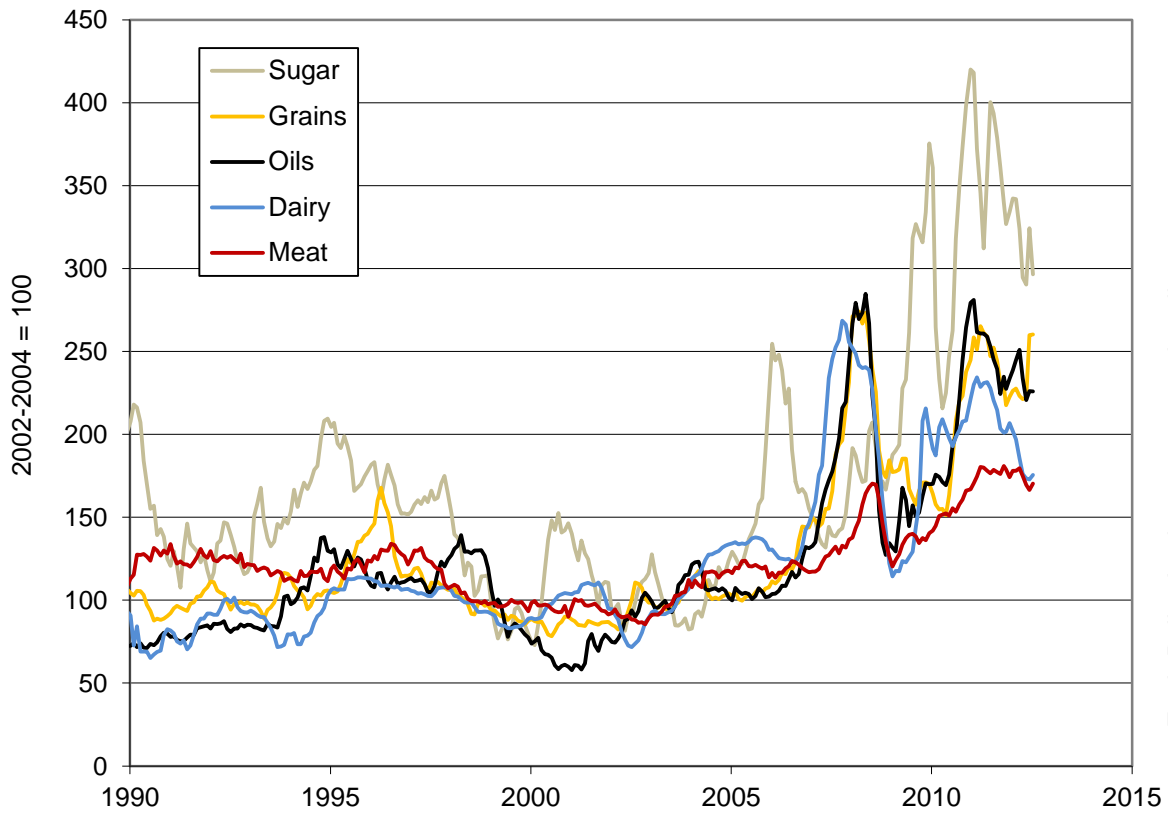
World Monthly Grains Price Index, January 1990 - August 2012



Source: FAO

Earth Policy Institute - www.earth-policy.org

World Monthly Price Indices for Meat, Dairy, Grains, Oils, and Sugar, January 1990 - August 2012



Source: FAO

Countries Receiving World Food Programme Aid, August 2012

Country/Territory	Emergency Operations ¹	Protracted Relief and Recovery Operations ²	Member of Top 20 Failing States List
Afghanistan	X	X	X
Algeria		X	
Armenia		X	
Bangladesh		X	
Bolivia		X	
Burkina Faso	X	X	
Burma (Myanmar)		X	
Burundi		X	X
Cambodia	X		
Cameroon	X	X	
Central African Republic		X	X
Chad		X	X
Côte D'Ivoire	X	X	X
Congo		X	
Democratic Republic of the Congo	X	X	X
Djibouti		X	
Egypt	X		
El Salvador		X	
Ethiopia		X	X
Gambia	X		
Ghana		X	
Guatemala		X	
Guinea		X	X
Haiti		X	
Honduras		X	
Iran		X	
Iraq	X	X	X
Jordan	X		
Kenya		X	X
Lebanon	X		
Liberia	X	X	
Libya	X		
Madagascar		X	
Malawi		X	
Mali	X		
Mauritania	X		
Mozambique		X	
Namibia		X	
Nepal		X	
Nicaragua		X	
Niger	X	X	X
North Korea		X	
Occupied Palestinian Territory	X	X	
Pakistan	X		X
Philippines		X	
Rwanda		X	
Senegal		X	
Sierra Leone		X	
South Sudan*	X		X
Sri Lanka		X	
Swaziland		X	
Syria	X		
Tajikistan		X	
Tanzania		X	
Turkey	X		
Tunisia	X	X	
Uganda		X	X
Yemen	X	X	X
Zambia		X	
Zimbabwe		X	X
Total	23	48	16

¹ Emergency Operations (EMOPs): WFP carries out EMOPs in countries hit by sudden disasters such as floods; by more gradually-occurring disasters such as drought or crop failure; or by civil unrest, conflict, displacement of large numbers of people, and/or influx of refugees. The typical duration for EMOPs is between three months and one year, but an EMOP can last up to two years.

² For situations in which communities will need more help to recover and to restore food security after the EMOP expires, WFP plans and implements a Protracted Relief and Recovery Operation (PRRO).

* According to Fund for Peace: "Though South Sudan has been included for the first time as the Index's 178th country, it will not receive a formal rank for the 2012 Index as the data available since independence does not constitute a full year and thus cannot be accurately compared to the other 177 countries."

Source: Compiled by Earth Policy Institute from U.N. World Food Programme, "Operations," at www.wfp.org/operations, viewed 16 August 2012; and from from Fund for Peace, "Failed States Index," at www.fundforpeace.org/web, updated 2012.

This is part of a supporting dataset for Lester R. Brown, **Full Planet, Empty Plates: The New Geopolitics of Food Scarcity** (New York: W.W. Norton & Company, 2012). For more information, see Earth Policy Institute on-line at www.earth-policy.org.

Food Insecurity Indicators in World's Hungriest Countries

Global Hunger Index (2011)	Country	Share Undernourished People (2005-2007)	Share of Underweight Children under Five Years (2004-2009) Percent	Under Five Mortality (2009)
39.0	Democratic Republic of the Congo	69	28	20
37.9	Burundi	62	35	17
33.9	Eritrea	64	32	6
30.6	Chad	37	34	21
28.7	Ethiopia	41	35	10
28.2	Haiti	57	19	9
27.1	Timor-Leste	31	45	6
27.0	Central African Republic	40	24	17
26.2	Comoros	46	22	10
25.4	Yemen	31	39	7
25.2	Sierra Leone	35	21	19
24.5	Bangladesh	27	41	5
24.2	Angola	41	16	16
24.0	Zambia	43	15	14
23.7	India	21	44	7
23.0	Niger	20	33	16
22.7	Mozambique	38	16	14
22.5	Djibouti	28	30	9
22.5	Madagascar	25	37	6
21.5	Liberia	33	20	11
21.5	Sudan	22	32	11
21.0	Rwanda	34	18	11
20.7	Pakistan	26	28	9
20.5	Tanzania	34	17	11
20.2	Lao People's Democratic Republic	23	32	6
20.1	Togo	30	21	10

Note: Index is based on 3 indicators: proportion of undernourished in the population, prevalence of underweight children under five years, and under five mortality rate. Data from the most recent year available is used to calculate index. Categories of index are ≤ 4.5 - low, 5 to 9.9 - moderate, 10 to 19.9 - serious, 20 to 29.9 - alarming, ≥ 30 - extremely alarming hunger.

Source: Compiled by Earth Policy Institute from Deutsche Welthungerhilfe, IFPRI, and Concern Worldwide, *2011 Global Hunger Index: The Challenge of Hunger: Taming Price Spikes and Excessive Food Price Volatility* (Bonn, Washington, DC, and Dublin: 2011), pp. 49-50.

This is part of a supporting dataset for Lester R. Brown, **Full Planet, Empty Plates: The New Geopolitics of Food Scarcity** (New York: W.W. Norton & Company, 2012). For more information, see Earth Policy Institute on-line at www.earth-policy.org.